



Forge  
**SUPER** powerful  
connections.

## BIO 2015 Pre-Event Planner



Learn how BIO One-on-One Partnering™  
can increase your ROI on page 6.

Register at [convention.bio.org](http://convention.bio.org). #BIO2015



**BIO** International  
Convention  
*The Global Event for Biotechnology*

Convention: June 15-18, 2015  
Exhibition & Partnering: June 16-18, 2015  
Pennsylvania Convention Center  
Philadelphia, PA





## Protect Your Passion

Whether you're developing a new cancer treatment, turning algae into energy, or connecting doctors a world apart, what you do is more than a job. The passion of BIO members makes the world a better place. Preventing, treating or curing disease. Delivering renewable, clean energy. Feeding the hungry.

Our passion is to support your company's development by delivering specialized insurance and risk management solutions that minimize loss potential, and protect you from the financial consequences of a loss or lawsuit.

We know your business risks are as unique as your DNA, and our dedicated life science practice is invested in protecting them. Our commitment to and experience in life sciences has earned Chubb the endorsement of BIO. And if you're a member of BIO, or of a state or regional biotechnology association that endorses the program, you're eligible for a product liability and clinical trial liability insurance premium discount in most states.\*

For more information on how Chubb can protect your passion, call your independent insurance agent or broker, or visit our website on [www.chubb.com](http://www.chubb.com).



Think **LEADERSHIP**. Think Chubb.

\*Subject to regulatory approval

Chubb Group of Insurance Companies ("Chubb") is the marketing name used to refer to the insurance subsidiaries of The Chubb Corporation. For a list of these subsidiaries, please visit our website at [www.chubb.com](http://www.chubb.com). Actual coverage is subject to the language of the policies as issued. © 2014 Chubb & Son, a division of Federal Insurance Company. Chubb, Box 1615, Warren, NJ 07061-1615

# Get ready for four **SUPER**charged days.

As a biotech professional, you're on a mission to feed, fuel and heal the world. BIO 2015 is an integral part of your strategy to achieve the extraordinary. It's where you forge super-powerful connections with potential business partners—15,000 of the industry's best and brightest professionals—and sharpen your vision with new information and ideas.

Accelerate your business goals and your career with the tools, connections and information you'll get at BIO. Start planning now.

## Table of Contents

Who Attends BIO.....	4
Can't-Miss List.....	5
NEW BIO One-on-One Partnering™.....	6
BIO Sponsors.....	8
Keynote Luncheons.....	9
Networking & Evening Events.....	10
Super Sessions.....	12
Featured Speakers.....	14
Program Overview.....	16
Sessions & Events by Day.....	18
BIO Exhibition Overview.....	26
Exhibitor List.....	28
BIO Career Fair.....	32
Travel & Hotel Information.....	33
Tri-State Region.....	34
BIO's "Everyday Superheroes" Contest Finalists.....	36
Registration Packages.....	37
Media & Association Partners.....	38
Company Presentations.....	39

## Thanks to Our Regional Hosts:

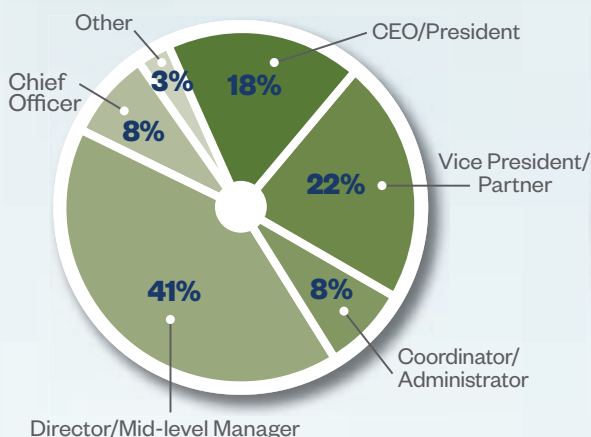


# Forge **SUPER** powerful connections with the everyday heroes of biotech.

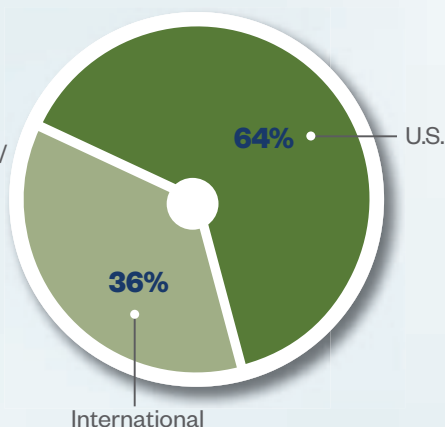
Meet the professionals driving innovation at biotech and pharma companies, academic institutions, state biotechnology centers and related organizations. Biotech's everyday heroes are flying in from 65 countries for the BIO International Convention in Philadelphia, where together they will share insights, forge alliances and propel the industry forward with exciting advancements.

## Who Attends

Management Role



Domestic/International



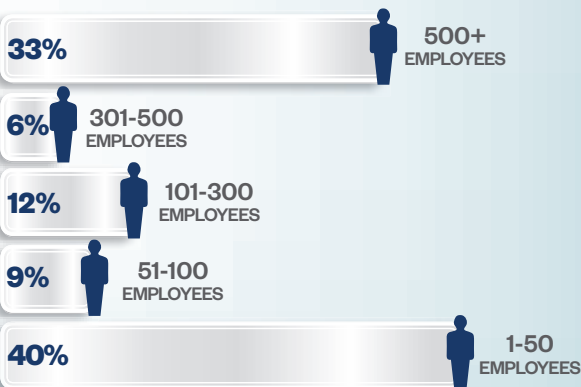
See an up-to-date list of attendees at [convention.bio.org/attend](http://convention.bio.org/attend).

## A Cross Section of the Industry

- BIO IT
- Business Development/Finance
- Consulting/Business Services
- Digital Health
- Legal
- Manufacturing/Operations
- Marketing/Sales/Media
- Policy/Government Affairs
- Research & Development
- Researcher/Tech Transfer/Student

## Companies at BIO

More than 4,000 companies attend BIO, and a majority of them are active in the BIO One-on-One Partnering™ system or as exhibitors. BIO is effective for companies of all sizes—especially small companies!



# The BIO 2015 “Can’t-Miss” List

Excitement is building for the largest biotech gathering of the year. Here are a few new features that have the industry talking:

- ★ Monday’s Kickoff Concert featuring **Boyz II Men, The Roots, and Kool & The Gang.**

See page 10.



- ◆ The Introduction of BIO’s Next Generation Partnering System.  
See page 6.

- ★ Tuesday and Wednesday Keynote Luncheons featuring award-winning journalist, **Tom Brokaw** and **Dr. Eric Topol.**

See page 9.



- ★ Wednesday **Unplugged Pre-Party & Reading Terminal Reception:** Join us for a lively block party with unique entertainment.  
See page 11.

## Two floors of exhibits!

Don’t miss App Bar demonstrations in the Digital Health Zone, poster presentations in the Academic Zone and SBIR-funded companies in the NIH and NSF Innovation Zone.  
See page 26.



## New ways to network and have fun!

Don’t miss BIO’s Headshot Lounge, NASA Exhibit, Social Photo Booth or the Cheesesteak Wars in the BIO Metropolis!

- ★ Open to Convention Access registration and above
- ◆ Open to Convention Access & Partnering registration



## ONE PARTNERING™

Powered by BIO

Sponsored by: *Johnson & Johnson*

BIO is completely changing the way that your team does business! Our new BIO One-on-One Partnering™ system will dramatically reduce your business development costs while increasing your partnering effectiveness year-round. Learn more at [convention.bio.org/partner](http://convention.bio.org/partner).

### Partnering Hours

Tuesday-Thursday: 7:30 am – 5:30 pm

### Company Presentation Hours

Tuesday-Wednesday: 9:00 am – 5:00 pm

Thursday: 9:00 am – 4:00 pm

### New System Features:

- 1. Gain additional company visibility:** In-depth profiles allow you to attach presentations, videos and other media to your profile.
- 2. Mark your availability and maximize your time onsite:** View your educational sessions and company presentations alongside your partnering meetings.
- 3. View your schedule** on your iPad or your phone (in myBIO), and export your schedule to Outlook from the partnering system.
- 4. Save your searches** and share results with colleagues to easily find an asset.
- 5. Your company is now easier to find** thanks to our Thomson Reuters Cortellis integration.
- 6. Breeze through meeting requests and scheduling:** It's easier and faster to use, with support for "tagging" requests, cc'ing others and setting request priorities.
- 7. Accept or decline meetings** directly through your email.
- 8. Walk less between meetings:** Our algorithm schedules meetings with your feet in mind.

### BIO Business Forum Sponsors (As of March 25, 2015)

AbbVie; Alexion Pharmaceuticals, Inc.; Amgen; Astellas; AstraZeneca; Baxter Healthcare Corp.; Bayer HealthCare; Bill & Melinda Gates Foundation; Biogen; Boehringer Ingelheim Pharmaceuticals, Inc.; Bristol-Myers Squibb; Chugai Pharmaceutical Co.; Ltd.; Daiichi Sankyo; Depomed; Eli Lilly and Company; EMD Millipore; Foley Hoag LLP; Genentech; GSK; Johnson & Johnson; MedImmune; Merck; Novozymes; Pfizer; Purdue Pharma L.P.; Roche; Sanofi; Sanofi Pasteur; Servier; Shire; Takeda Pharmaceuticals International; Teva Pharmaceuticals; Torrey Partners; Upsher-Smith Laboratories, Inc.; Wedbush PacGrow Healthcare

### Deliver a Company Presentation to Attract Partners!

See a list of presenting companies on page 39. Claim one of the remaining 15-minute time slots at [convention.bio.org/company-presentations](http://convention.bio.org/company-presentations).

## Optimize meeting strategy, workflow and information management with BIO One-on-One Partnering™ Plus.

### BIO One-on-One Partnering™

Access included with BIO 2015 Partnering Registration.

### BIO One-on-One Partnering™ PLUS

Year-round subscription. Visit [convention.bio.org/partnerplus](http://convention.bio.org/partnerplus).

#### BIO One-on-One Partnering™ Meetings

Profiles  
Search & bookmarks  
Calendar  
Meeting requests  
Scheduling



April 3, 2015 + 1 year



#### Internal Collaboration/Scouting

Voting on companies  
Notes / comment threads  
Content management  
Admin dashboard  
Bulk accept & decline  
Email fetch  
Automatic data transfer  
Triage, workflow & status  
History from pre-BIO 2015



May – July 3, 2015

**\*limited-time offer\***



#### History year-round



#### Integration

Federated single sign-on  
Salesforce.com push



- **Better enterprise-wide collaboration:** Vote on companies, add notes and comments to meetings and benefit from a new partnering admin dashboard.
- **Complete access to your company's partnering history:** All your notes, documents and activities from past partnering events in one place.
- **Reduce data entry and management:** Seamless information transfer from conference, minutes, notes, profile info, assets and more.
- **Improved workflow to save time and money:** Manage your meeting follow-up with ease—you can now triage, assign and scout following the Convention.

Learn how to subscribe at [convention.bio.org/partnerplus](http://convention.bio.org/partnerplus).

Powered by:  INOVA  
near partnering place

# 2015 Sponsors

As of March 25, 2015

## Double Helix

abbvie

AstraZeneca 

 MERCK

AMGEN®

Johnson & Johnson

 Takeda

## Helix

**Baxter**

*Lilly*

 Pfizer

## Premier Sponsors

Alexandria Real Estate Equities, Inc /  
Alexandria Venture Investments

BIO's Food & Agriculture Section  
Governing Board

Boehringer Ingelheim Pharmaceuticals, Inc  
Celgene

Daiichi Sankyo  
EMD Serono, Inc  
Genentech  
Georgia, USA  
MedImmune  
Sanofi Pasteur

## Conference Sponsors

Alexion Pharmaceuticals, Inc  
Alkermes  
Alnylam Pharmaceuticals  
Astellas  
BASF Plant Science  
Bayer CropScience  
Bayer HealthCare  
Bill & Melinda Gates Foundation  
Biogen  
BioNJ  
BIOTECCanada  
Bristol Myers Squibb  
Business Wire  
Campbell Alliance—an inVentiv Health  
Company  
Choose New Jersey  
Chubb Group of Insurance Companies  
Chugai Pharmaceutical Co., Ltd.  
Council for Biotechnology Information/  
GMO Answers  
CSL Behring  
Dentons  
Depomed  
Dow AgroSciences  
DuPont Corporation  
EY  
Foley Hoag LLP  
Genzyme, a Sanofi Company

GSK  
KPMG  
Mintz, Levin, Cohn, Ferris, Glovsky and  
Popeo, P.C.  
Monsanto  
Morgan Lewis  
Navigate  
Novartis Pharmaceuticals Corporation  
Novavax  
Novozymes  
Penn Center for Innovation  
Pennsylvania  
Pharma Targeting, Ltd.  
Philips  
Purdue Pharma L.P.  
Sanofi  
Select Greater Philadelphia  
Servier  
Shire  
Teva Pharmaceuticals  
Torreya Partners  
UCB, Inc  
Upsher-Smith Laboratories, Inc  
U.S. Chamber of Commerce's Global  
Intellectual Property Center  
VWR  
Wedbush PacGrow Healthcare



# KEYNOTE LUNCHEONS

**TUESDAY • 12:00 pm – 1:30 pm**



Keynote Speaker  
**Tom Brokaw**

**News Anchor, Journalist**

Sponsored by: **Janssen**  
PHARMACEUTICAL COMPANIES  
OF JANSSEN-CILAG

Tom Brokaw has spent his entire distinguished journalism career with NBC News. Join us at BIO 2015, where you will be entertained, enlightened and informed by Tom Brokaw's experiences and observations on the current issues affecting the United States and the world.

**During the Luncheon:**

- BioGENEius Challenge Awards
- BIO Everyday Superheroes

Interviewed by:

**Jim Greenwood**

**President & CEO, BIO**



**WEDNESDAY • 12:00 pm – 1:30 pm**

Keynote Speaker

**Dr. Eric Topol**

**Dean of Digital Medicine, Director,  
Scripps Translational Science Institute**

Join us for our Wednesday keynote with Dr. Eric Topol, named the #1 Most Influential Physician Executive in the United States by *Modern Healthcare*. Dr. Topol is widely recognized as the leading authority on digital medicine and its impact on every branch of healthcare. His vision for our industry is bound to keep the crowd riveted.



**Following the Wednesday Keynote Luncheon:**

**1:45 pm – 2:45 pm—Eric Topol Book Signing  
in the Digital Health Zone**

Register for *Convention Access* or higher to attend  
**Keynote Luncheons and BIO Evening Receptions.**  
Learn more at [convention.bio.org/register](http://convention.bio.org/register).

# NETWORKING & EVENING EVENTS

Networking and evening events have never been better than at BIO 2015. And, BIO has a few surprises planned throughout the four days.

## Monday, June 15



**Monday Kickoff Concert:**  
**Boyz II Men, The Roots, Kool & The Gang**

7:00 pm – 9:00 pm  
The Liacouras Center

*Sponsored by:*



## Tuesday, June 16

### Education Track Receptions

Network with speakers and attendees at the close of these session tracks:

- Business Development & Finance
- Food & Agriculture
- Next Generation Biotherapeutics
- Translational Research

For locations and schedule details, visit [convention.bio.org](http://convention.bio.org).

### Intellectual Property Meetup

1:30 pm – 2:00 pm

### Women In Bio (WIB)—Tri-State Professionals & Executives in Life Sciences Meetup

3:00 pm – 4:00 pm

### Tuesday Is Open Night

Experience Philadelphia's exciting and abundant restaurant scene. *Make reservations early!*



Register for *Convention Access*, BIO's most popular networking package, to make the most of your experience in Philadelphia.

## Wednesday, June 17

### 🕒 “Unplugged” Pre-Party + Reading Terminal Reception

6:30 pm – 9:30 pm

*Adjacent to Convention Center*

**6:30 pm – 7:30 pm:** Join us in Grand Hall for drinks, music and unique entertainment!

**7:30 pm – 9:30 pm:** The party moves outside and into Reading Terminal Market! Thousands will flock to this lively block party to sample Philadelphia's finest with lots of surprises in store!

*Sponsored by:* 



### Eric Topol Book Signing

1:45 pm – 2:45 pm

### Women in BIO (WIB) Speed Networking Session

2:00 pm – 3:00 pm

### Digital Health Meetup

3:00 pm – 4:00 pm

### Patient Advocacy Pavilion Meetup

4:00 pm – 5:00 pm

### Academic & Tech Transfer Wine Social

5:00 pm – 6:30 pm

### Exhibitor Hospitality Receptions—Now on Wednesday!

5:00 pm – 6:30 pm

Enjoy food, drinks and entertainment on the exhibit floor before heading over to the Reading Terminal Receptions!

### Education Track Receptions

- Digital Health
- Infectious Disease
- Orphan Disease
- Personalized Medicine & Diagnostics

## Thursday, June 18

### Digital Health Idea Design Studio

8:30 am – 12:30 pm

Participate in MIT Hacking Medicine's Idea Design Studio for a 4-hour experience that takes participants from an idea to actionable next steps for starting a Digital Health venture.

*Hosted by:* 

### BIO Career Fair

2:00 pm – 7:00 pm

### International Reception

3:30 pm – 5:00 pm

*Sponsored by:* 

# SUPER visionary

## Industry leaders forecast the future of biotech.

Join thought leaders in the biotech arena as they share industry insights and discuss the endless possibilities for the future of healthcare.

*Open to Education & Exhibition Access and above unless otherwise noted.*

### Ensuring Patient Access to Innovative Medicine

**Tuesday, June 16** • 10:00 am – 11:30 am

*Sponsored by: Novartis Pharmaceuticals Corporation*

*Moderator:*

**Christi Shaw**, U.S. Country Head, President, Novartis Corporation & President, Novartis Pharmaceuticals Corporation

*Speakers:*

**Randy Beranek**, President and CEO, National Psoriasis Foundation

**Dana Goldman**, PhD, Leonard D. Schaeffer Chair and Director of the Schaeffer Center for Health Policy and Economics, University of Southern California

**Scott Gottlieb**, MD, Resident Fellow, American Enterprise Institute

**Arthur Kaplan**, PhD, Professor of Bioethics, Director, Division of Medical Ethics, New York University Langone Medical Center

**Richard Pops**, Chairman and Chief Executive Officer, Alkermes, Inc.

### M&A and Capital Allocation: Everything Old Is New Again

**Tuesday, June 16** • 2:00 pm – 3:30 pm

*Sponsored by: EY*

*Moderators:*

**Glen Giovannetti**, Global Life Sciences Leader, EY

**Jeffrey Greene**, Global Transactions Leader for Life Sciences, EY

*Speakers:*

**Robert M. Davis**, Executive Vice President and Chief Financial Officer, Merck

**Geno Germano**, Group President, Global Innovative Pharma Business, Pfizer

**David Pyott**, Former Chairman of the Board and Chief Executive Officer, Allergan

**Paul Stoffels**, MD, Chief Scientific Officer, Janssen Pharmaceutical Companies of Johnson & Johnson

### Investment Incentives to Combat Antimicrobial Resistance (AMR)

**Wednesday, June 17** • 10:00 am – 11:30 am

*Sponsored by: Merck*

*Speakers:*

**Helen W. Boucher**, MD, FACP, FIDSA, Associate Professor, Tufts University School of Medicine

**Julie Gerberding**, MD, Executive Vice President, Strategic Communications, Global Public Policy, and Population Health, Merck & Co Inc

**Kenneth J. Hillan**, MB, ChB, Chief Executive Officer, Achaogen

**Jim O'Neill**, Economist, Author, *Review on Antimicrobial Resistance, Tackling Drug-resistant Infections Globally*

**For details, visit  
[convention.bio.org/  
program](http://convention.bio.org/program).**



Beranek



Boucher



Germano



Das



Donabedian



Germano





## Accelerating Innovation in the 21st Century

**Wednesday, June 17** • 2:00 pm – 3:30 pm

*Sponsored by: AstraZeneca*

*Speaker:*

**Paul Hudson**, President, AstraZeneca US and Executive Vice President, North America, AstraZeneca

## Riding the Bull Market: What's in Store for Biotech Dealmakers in 2015?

**Thursday, June 18** • 10:00 am – 11:30 am

*Sponsored by: Campbell Alliance—  
an inVentiv Health company*

*Moderators:*

**Sougato Das**, Director, Partnering Products & Services, Biotechnology Industry Organization

**Neel Patel**, Vice President, Corporate Development, Campbell Alliance—  
an inVentiv Health Company

*Speakers:*

**David Donabedian**, Vice President, Head of Ventures & Early Stage Collaborations, AbbVie

**Patrick Verheyen**, Global Head, Business Development, Janssen Pharmaceutical Companies of Johnson & Johnson

**Timothy P. Walbert**, Chairman, President and Chief Executive Officer, Horizon Pharma

## The Next Step Up: How Companies Build Successful Therapeutic Franchises from the Ground Up

**Thursday, June 18** • 12:00 pm – 1:30 pm

*Sponsored by: EMD Serono, Inc.*

*Speakers:*

**Paris Panayiotopoulos**, President and Managing Director, EMD Serono, Inc.

## Scientific American WORLDVIEW Super Session

**Thursday, June 18** • 2:00 pm – 3:30 pm

*Open to all attendees:* Hear a dynamic panel of international industry luminaries examine the future of global innovation in a lively conversation.

- What is happening in biotechnology and life science development on the global stage?
- Which issues will bring all nations together in the future?
- How are individual countries finding new ways to grow the industry, and in some cases, do it better than the US?

*Moderator:*

**David Brancaccio**, Host, American Public Media's *Marketplace* Morning Report



Gottlieb



Gerberding



Giovannetti



Green



Hillan



Hudson



Kaplan



Panayiotopoulos



Patel



Pops



Pyott



Shaw



## FEATURED SPEAKERS

# SUPERinsightful education

BIO attracts the best of biotech, which means our education sessions are led by the cream of the crop. Each year, session proposals are carefully vetted by your peers and only the most compelling ones are selected. Here's just a sampling of our impressive 2015 session speakers.



Birnbaum

### **Morris Birnbaum MD, PhD**

*Chief Scientific Officer,  
Cardiovascular and  
Metabolic Disease Research,  
Pfizer Inc.*

---

**Primary Care/Chronic  
Diseases**



Chandra

### **Amitabh Chandra**

*Professor of Public Policy  
and Director of Health  
Policy Research at the  
Harvard Kennedy School  
of Government, Precision  
Health Economics*

---

**Value, Patient Access &  
Commercialization**



Bosley

### **Katrine Bosley**

*Chief Executive Officer,  
Editas Medicine*

---

**Next Generation  
Biotherapeutics**



Boutin

### **Marc Boutin**

*Chief Executive Officer,  
National Health Council*

---

**Regulatory Science**



Caulcott

### **Celia Caulcott**

*Executive Director Innovation  
and Skills, Biotechnology and  
Biological Sciences Research  
Council*

---

**Translational Research**



Coyle

### **Anthony Coyle**

*Vice President and Chief  
Scientific Officer, Centers  
for Therapeutic Innovation,  
Pfizer*

---

**Translational Research**



Dahiyat

### **Dr. Bassil Dahiyat**

*President and Chief  
Executive Officer, Xancor*

---

**Infectious Diseases**



Ganot

### **Ilan Ganot**

*CEO, Solid Ventures*

---

**Orphan & Rare Diseases**

Register for **Education & Exhibition Access** or higher  
to attend the 2015 education sessions and Super Sessions.  
Learn more at [convention.bio.org/register](http://convention.bio.org/register).



Golian

**Paul Golian**

*Vice President & Assistant General Counsel, Intellectual Property, Bristol-Myers Squibb Company*

**Intellectual Property**



Natauri

**Jo Natauri**

*Managing Director, Investment Banking, Goldman Sachs*

**Personalized Medicine & Diagnostics**



Hoos

**Axel Hoos**

*Vice President and Head Immune-Oncology Discover Performance Unit, GlaxoSmithKline Pharmaceuticals (GSK)*

**Oncology**



Rockey

**Sally Rockey**

*Deputy Director for Extramural Research, National Institutes of Health (NIH)*

**Corporate Best Practices**



Kraft

**Daniel Kraft, MD**

*Medicine and Neuroscience Chair, Singularity University*

**Digital Health**



Shaw

**Dr. Kiran Mazumdar Shaw**

*CMD, Biocon Limited*

**Emerging Opportunities in Global Markets**



Kurilla

**Michael Kurilla**

*Director, Office of BioDefense, Research Resources, and Translational Research National Institutes of Health*

**Business Development & Finance**



Willmitzer

**Professor Dr. Lothar Willmitzer**

*Director Max-Planck-Institute of Molecular Plant Physiology, Potsdam, Germany*

**Food & Agriculture**



Monroe

**Adam Monroe**

*President, North America Novozymes*

**Biofuels & Renewable Chemicals**

Your daily dose of powerful ideas and education

Gather with the industry’s most brilliant minds to discuss the breakthroughs, advances and issues that will define the future of biotech.

	Mon	Tues	Wed	Thurs
<div>★ <b>Keynote Luncheons:</b></div> <div>World-renowned speakers discuss the hottest topics in biotech. <i>See details on page 9.</i></div>		✓	✓	
<div><b>Super Session:</b></div> <div>Industry analysis and projections on the future of the industry, led by biotech’s most influential and successful leaders. <i>See details on page 12-13.</i></div>		✓	✓	✓
<div><b>Education Tracks:</b></div> <div>Expert-led sessions scheduled every day, covering a variety of issues within 16 compelling topic tracks. <i>See track titles on opposite page.</i></div>	✓	✓	✓	✓
<div>⊕ <b>Special Programs:</b></div> <div>In-depth education and training for attendees in various areas and phases of biotech. From boot camp for entrepreneurs to ethics in drug development—there’s something special for everyone at BIO.</div>	✓	✓		✓
<div>✱ <b>Company Presentations</b></div>		✓	✓	✓
<div>✱ <b>Global Innovation Hub Presentations</b></div>			✓	
<div>✱ <b>Start Up Stadium</b></div>		✓	✓	✓

All events are open to Education & Exhibition Access and above unless otherwise noted.

- ✱ **Suggested events that are open to all attendees**
- ★ **Open to Convention Access registration and above**
- ⊕ **Additional/separate registration required**

Visit [convention.bio.org/register](https://convention.bio.org/register) to learn which registration package is best for you and your team.



## Education Tracks

The BIO 2015 educational planning committee chooses session topics that are top of mind for you and your colleagues in all areas of the industry. Choose from 16 education tracks offering provocative, cutting-edge content.

		Mon	Tues	Wed	Thurs
<b>Biofuels &amp; Renewable Chemicals</b> <i>Sponsored by: Novozymes</i>			✓		
<b>Business Development &amp; Finance</b> <i>Sponsored by: Foley Hoag LLP</i>		✓	✓	✓	✓
<b>Corporate Best Practices</b>		✓	✓	✓	✓
<b>Digital Health</b>			✓	✓	
<b>Emerging Opportunities in Global Markets</b> <i>Sponsored by: Amgen and U.S. Chamber of Commerce's Global Intellectual Property Center</i>			✓	✓	✓
<b>Food &amp; Agriculture</b> <i>Sponsored by: BIO Food &amp; Agriculture Section Governing Board</i>			✓		
<b>Infectious Disease</b> <i>Sponsored by: Novavax</i>			✓	✓	✓
<b>Intellectual Property</b> <i>Sponsored by: U.S. Chamber of Commerce's Global Intellectual Property Center</i>			✓	✓	✓
<b>Next Generation Biotherapeutics— The Time Is Now</b> <i>Sponsored by: Janssen Pharmaceutical Companies of Johnson &amp; Johnson</i>			✓		
<b>Oncology</b> <i>Sponsored by: Celgene</i>					✓
<b>Orphan &amp; Rare Diseases</b> <i>Sponsored by: Amgen, CSL Behring, and Genzyme, a Sanofi Company</i>				✓	
<b>Personalized Medicine &amp; Diagnostics</b>				✓	✓
<b>Primary Care/Chronic Disease</b>			✓		
<b>Regulatory Science</b> <i>Sponsored by: Eli Lilly and Company</i>		✓	✓	✓	✓
<b>Translational Research</b>			✓		
<b>Value, Patient Access &amp; Commercialization</b> <i>Sponsored by: Baxter Healthcare Corp.</i>			✓	✓	

# SESSIONS & EVENTS BY DAY

**Tuesday, Wednesday and Thursday are full days of exhibits, partnering and education!**

## **BIO Exhibition Open & Exhibitor Booth Partnering**

Tuesday – Thursday: 9:30 am – 5:30 pm

## ❖ **BIO One-on-One Partnering™ Meetings**

Tuesday – Thursday, 7:30 am – 5:30 pm

## \* **Company Presentations**

Tuesday – Wednesday, 9:00 am – 5:00 pm; Thursday, 9:00 am – 4:00 pm

## **Registration Open**

Saturday, 1:00 pm – 5:00 pm; Sunday – Thursday, 7:30 am – 5:30 pm

## **SATURDAY, JUNE 13, 2015**

7:30 am – 6:00 pm

- + **Executive Training Courses: Advanced and Fundamentals BD Workshops**

## **SUNDAY, JUNE 14, 2015**

7:30 am – 6:00 pm

- + **Executive Training Courses: Advanced and Fundamentals BD Workshops**

8:00 am – 7:30 pm

- + **11<sup>th</sup> Annual Biotechnology Entrepreneurship Boot Camp**  
*Special Program*

## **MONDAY, JUNE 15, 2015**

7:30 am – 6:00 pm

- + **Executive Training Courses: Advanced and Fundamentals BD Workshops**

8:00 am – 6:30 pm

- + **11<sup>th</sup> Annual Biotechnology Entrepreneurship Boot Camp**  
*Special Program*

9:00 am – 3:30 pm

- \* **International BioGENEius Challenge**  
*Special Program*

9:00 am – 4:30 pm

- + **The Science of Biotech—BIO 2015 Affiliate Program for Non-Scientists**  
*Special Program*

12:30 pm – 2:00 pm

**2921 – Thirty Years of Venture Capitalism in Biotechnology**  
*Special Program*

2:00 pm – 3:00 pm

- \* **What to Expect at BIO 2015: Attendee Orientation**  
*Special Program*

2:00 pm – 3:00 pm

**1459 – Build-to-Buy Biotech: Filling Big Pharma Pipelines with Tailor Made Innovation**

*Business Development & Finance*

3:00 pm – 4:30 pm

**2440 – The Bioethics of Drug Development: You Decide**  
*Special Program*

3:00 pm – 4:15 pm

**1576 – Learning from Ebola—Strengthening the Public-Private Partnership to Improve Preparedness**  
*Business Development & Finance*

3:00 pm – 4:15 pm

**1373 – Balancing the Biotech Boardroom: The Business Case for Diversity**  
*Corporate Best Practices*

3:00 pm – 4:15 pm

**1519 – Enabling Future Medical Advances: A Review of Global Initiatives to Increase Clinical Trial Transparency**  
*Regulatory Science*

3:30 pm – 5:00 pm

**2801 – Innovation and Entrepreneurship Trends Catalyzing the Greater Philadelphia Life Sciences Ecosystem and Reception**  
*Special Program*

7:00 pm – 9:00 pm

★ **Monday Kickoff Concert: Boyz II Men, The Roots, Kool & The Gang**

The Liacouras Center





## TUESDAY, JUNE 16, 2015

7:30 am – 8:30 am

**2444 – Next Generation Biotherapeutics Networking Breakfast**

*Next Generation Biotherapeutics—  
The Time Is Now*

8:00 am – 5:00 pm

**+ 12<sup>th</sup> Annual Community College Program**

9:00 am – 10:00 am

**2223 – Financing Genomes: Turning Transformative Innovation into Market Success**

*Biofuels & Renewable Chemicals*

9:00 am – 10:00 am

**1367 – Son of a Pitch—Do You Have the Talent to Engage Investors?**

*Business Development & Finance*

9:00 am – 10:00 am

**1592 – The Devil Is in the Data: Electronic Health Records, Privacy and Cybercrime**

*Corporate Best Practices*

9:00 am – 10:00 am

**2242 – Opening Remarks: The Digitalization of Life Sciences**

*Digital Health*

9:00 am – 11:30 am

**2266 – Emerging Opportunities in Global Markets Opening Plenary**

*Emerging Opportunities in Global Markets*

9:00 am – 10:00 am

**2227 – Communication Supports Innovation: Telling Your Story**

*Food & Agriculture*

9:00 am – 10:00 am

**2228 – Intellectual Property Opening Plenary**

*Intellectual Property*

9:00 am – 10:00 am

**2255 – The Promise of Gene Editing**

*Next Generation Biotherapeutics—  
The Time Is Now*

9:00 am – 10:00 am

**1491 – The Human Microbiome : Translating Research into Therapeutics**  
*Primary Care/Chronic Disease*

9:00 am – 10:00 am

**2220 – Translational Research Opening Plenary: Industry and Academia Pair Up**

*Translational Research*

9:00 am – 10:00 am

**1663 – Moving Beyond Market Access to a Patient Centric World—The Five P's of Successful Stakeholder Engagement**

*Value, Patient Access & Commercialization*

9:00 am – 11:00 am

**2232 – Biosimilars Primer: What, Why, Who and How**

*Special Program*

9:00 am – 3:00 pm

**\* International BioGENEius Challenge**

*Special Program*

10:00 am – 11:00 am

**2222 – Legislative Best Practices in Support of Bioscience Economic Development**

*Special Program*

10:00 am – 11:30 am

**Super Session: Ensuring Patient Access to Innovative Medicine**

10:15 am – 11:30 am

**2224 – Industrial Biotech's Mighty Microbes Provide Cleaner and Greener Future**

*Biofuels & Renewable Chemicals*

10:15 am – 11:30 am

**1511 – Divide and Conquer: Licensing Strategies for Multiple Partners Around the World**

*Business Development & Finance*

10:15 am – 11:30 am

**2243 – The Internet of Everything Meets Digital Health**

*Digital Health*

*All events are open to Education & Exhibition Access and above unless otherwise noted.*

**\* Suggested events that are open to all attendees**

**★ Open to Convention Access registration and above**

**◆ Open to Convention Access & Partnering registration**

**+ Additional/separate registration required**

# SESSIONS & EVENTS BY DAY

## Tuesday continued

10:15 am – 11:30 am

**2267 – In Africa for Africa**

*Emerging Opportunities in Global Markets*

10:15 am – 11:30 am

**1345 – From Plants to Mammals:  
Multidisciplinary Pathways to Success**

*Food & Agriculture*

10:15 am – 11:30 am

**1392 – Antibody Therapeutics:  
May I Have Them All?**

*Intellectual Property*

10:15 am – 11:30 am

**1498 – Preventing Death From  
Cardiovascular Disease—Is It All  
About Diabetes & Obesity?**

*Primary Care/Chronic Disease*

10:15 am – 11:30 am

**1473 – Found in Translation: An Academia-  
Pharma Match-Up Sees Success**

*Translational Research*

10:15 am – 11:30 am

**1379 – Approval ≠ Commercial Success:  
Start Thinking Like a Payer**

*Value, Patient Access & Commercialization*

10:15 am – 11:45 am

**2256 – Nucleic Acid and Cell Therapy—  
Insights, Successes and Challenges**

*Next Generation Biotherapeutics—  
The Time Is Now*

1:30 pm – 2:00 pm

\* **Intellectual Property Meetup**

12:00 pm – 1:30 pm

**Tuesday Keynote  
Luncheon: Tom Brokaw**

*News Anchor, Journalist*



2:00 pm – 3:30 pm

**Super Session: M&A and Capital**

**Allocation: Everything Old Is New Again**

2:00 pm – 3:15 pm

**2225 – Biofuels and Renewable  
Chemicals Business Leaders**

*Biofuels & Renewable Chemicals*

**Don't Miss: Programming in  
the BioProcess Zone**

[convention.bio.org/bioprocess-theater](http://convention.bio.org/bioprocess-theater)

2:00 pm – 3:15 pm

**1438 – Moneyball: Strategies for  
Structuring Deals Between Small  
Biotechs and Big Pharma**

*Business Development & Finance*

2:00 pm – 3:00 pm

**2244 – Precision Medicine:  
Revolutionizing Today's Healthcare**

*Digital Health*

2:00 pm – 3:15 pm

**1521 – Africa's Leading Economies  
Welcome Industry Partnerships**

*Emerging Opportunities in Global Markets*

2:00 pm – 3:15 pm

**2269 – Research & Development in India —  
How India Plans to Intensify its R&D  
Investments**

*Emerging Opportunities in Global Markets*

2:00 pm – 3:15 pm

**1657 – Quantifying the Value of  
Intellectual Property to Society**

*Food & Agriculture*

2:00 pm – 3:15 pm

**1638 – The Impact of USPTO Inter Partes  
Review Proceedings on (Bio)Pharma**

*Intellectual Property*

2:00 pm – 3:15 pm

**2259 – Harnessing the Power of Antibodies**

*Next Generation Biotherapeutics—  
The Time Is Now*

2:00 pm – 3:15 pm

**1481 – The Revitalization of  
Neuroscience R&D**

*Primary Care/Chronic Disease*

2:00 pm – 3:15 pm

**2236 – Putting Patients in the Center:  
Advancing the Science of Patient  
Preference Assessment**

*Regulatory Science*

2:00 pm – 3:15 pm

**3042 – The Impact Biosimilars  
Will Have on States**

*Special Program*

2:00 pm – 3:15 pm

**1374 – Life Science Intermediaries:  
The Unsung Heroes in the  
Commercialization of Innovations**

*Translational Research*

2:00 pm – 3:15 pm

**1426 – Putting a Price on a Cure  
Value, Patient Access &  
Commercialization**

2:30 pm – 4:00 pm

**2263 – Boot Camp Supplemental  
Session: Emerging Trends in  
the Business of Biotechnology  
Entrepreneurship**

*Special Program*

3:00 pm – 4:00 pm

\* **Women In Bio (WIB)—Tri-State  
Professionals & Executives in Life  
Sciences Meetup**

3:15 pm – 4:15 pm

**2245 – Policy Matters: Privacy,  
Security and Bioethical Considerations  
of Big Data**

*Digital Health*

3:30 pm – 4:45 pm

**2226 – Industrial Biotech's Global  
Leaders Generating Innovative Solutions  
Biofuels & Renewable Chemicals**

3:30 pm – 4:45 pm

**1495 – What Are They Doing In There?  
The Mysteries and Practices of Large  
Pharma Transactions Organizations**

*Business Development & Finance*

3:30 pm – 4:45 pm

**1538 – Research and Innovation in  
Healthcare—the European Approach  
Emerging Opportunities in Global Markets**

3:30 pm – 4:45 pm

**1404 – India's Blueprint for Becoming  
a Manufacturing Hub  
Emerging Opportunities in Global Markets**

3:30 pm – 4:45 pm

**2268 – Public Sector Biotech Initiatives  
in Middle East and North Africa  
Emerging Opportunities in Global Markets**

3:30 pm – 4:45 pm

**1449 – Overcoming Global Obstacles  
to Acceptance of Food Biotechnology  
Food & Agriculture**

3:30 pm – 4:45 pm

**1366 – Redefining Infectious Disease:  
Bacteria in Health and Sickness  
Infectious Disease**

3:30 pm – 4:45 pm

**1353 – Celebrating Innovation—  
Retelling the IP Story of Crixivan,  
an Award-Winning Life Saver  
(Session and Reception)  
Intellectual Property**

**Don't Miss: Education Track  
Receptions on Tuesday and  
Wednesday**

*[convention.bio.org/networking](http://convention.bio.org/networking)*

3:30 pm – 4:45 pm

**1529 – Nanomedicine: The Next  
Big Thing?  
Next Generation Biotherapeutics—  
The Time Is Now**

3:30 pm – 4:45 pm

**2237 – Speaking Up: The Role of Patient  
Advocates in Shaping Regulatory and  
Science Policy  
Regulatory Science**

*All events are open to Education & Exhibition Access and above unless otherwise noted.*



**Suggested events that are open to all attendees**



**Open to Convention Access registration and above**



**Open to Convention Access & Partnering registration**



**Additional/separate registration required**

# SESSIONS & EVENTS BY DAY

## Tuesday continued

3:30 pm – 4:45 pm

**1429 – Inventing Your Own Hub:  
Evolving Institutional Models for  
Translational Medicine**

*Translational Research*

3:30 pm – 4:45 pm

**1422 – Paying for the 21st Century Cure  
Value, Patient Access & Commercialization**

4:00 pm – 5:00 pm

**Tech Transfer & Academic Meetup**

4:15 pm – 5:00 pm

**2420 – The Future of Health and Medicine:  
Where Can Technology Take Us?**

*Digital Health*

4:45 pm – 5:00 pm

**2620 – Innovation in Healthcare  
Roadmap Round Up on Next Generation  
Biotherapeutics**

*Next Generation Biotherapeutics—  
The Time Is Now*

## Tuesday—Open Night

Experience Philadelphia's  
world-class restaurant scene.

*Make reservations early!*



## WEDNESDAY, JUNE 17, 2015

9:00 am – 10:00 am

**1536 – The Concentration of Therapeutic  
Expertise: Asset Swaps and Innovation in  
Business Development**

*Business Development & Finance*

9:00 am – 10:00 am

**1601 – Corporate Culture is a Key  
Ingredient to Driving Business Growth**

*Corporate Best Practices*

9:00 am – 10:15 am

**2247 – Digital Health and the Transformation  
of Clinical Trial Management**

*Digital Health*

9:00 am – 10:15 am

**1348 – Reaching Out to Russia:  
The Biotech R&D Landscape and  
Global Drug Discovery Case Studies**

*Emerging Opportunities in Global Markets*

**Examine the global biotech  
landscape and cross-border  
initiatives in the *Emerging  
Opportunities in Global  
Markets* forum.**

9:00 am – 10:00 am

**2257 – Opening Plenary: Professor John  
Watson, Deputy Chief Medical Officer for  
England, Department of Health, United  
Kingdom**

*Infectious Diseases*

9:00 am – 10:00 am

**1517 – The Evolving Landscape of  
Patentable Subject Matter**

*Intellectual Property*

9:00 am – 10:00 am

**2233 – Orphan & Rare Disease Track  
Opening Plenary**

*Orphan & Rare Diseases*

9:00 am – 10:00 am

**2265 – Personalized Medicine Opening  
Plenary with Dr. Francis Collins**

*Personalized Medicine & Diagnostics*

9:00 am – 10:00 am

**1605 – E.U. Reimbursement Hurdles  
Could Become the Norm in the U.S.**

*Value, Patient Access & Commercialization*

10:00 am – 11:30 am

**Super Session: Investment Incentives to  
Combat Antimicrobial Resistance (AMR)**

10:15 am – 11:30 am

**1541 – Have It All? How to Address and  
Communicate Deal Contingencies**

*Business Development & Finance*

10:15 am – 11:30 am

**1532 – Reverse Innovation: Challenges in  
Making Drug Development a Two-Way  
Street**

*Emerging Opportunities in Global Markets*

10:15 am – 11:30 am

**1514 – Global Emergency Case Study: Ebola**  
*Infectious Diseases*

10:15 am – 11:30 am

**1396 – “Inventions Patentable”:  
Evaluating Proposed Amendments  
to Section 101**

*Intellectual Property*

10:15 am – 11:30 am

**1420 – The Power of Collaboration:  
Therapeutic Advances in Rare Diseases**

*Orphan & Rare Diseases*

10:15 am – 11:30 am

**1616 – The Future is Now in Precision  
Medicine: Developing Targeted Oncology  
Therapeutics**

*Personalized Medicine & Diagnostics*

10:15 AM – 11:30 AM

**2239 – Global Regulatory Trends for  
Biosimilars and Biotherapeutics**

*Regulatory Science*

10:15 am – 11:30 am

**1588 – How We Heal: New Patient Care  
Management Approaches**

*Value, Patient Access &  
Commercialization*

10:30 am – 11:45 am

**2248 – Light in the Tunnel – Successful  
Navigation of the Regulatory Landscape**

*Digital Health*

12:00 pm – 1:30 pm

**Wednesday Keynote  
Luncheon: Dr. Eric J. Topol**

Dean of Digital Medicine;  
Director, Scripps Translational  
Science Institute



1:45 pm – 2:45 pm

**Eric Topol Book Signing in the Digital  
Health Zone**

2:00 pm – 3:00 pm

**\* Women in BIO (WIB) Speed  
Networking Session**

2:00 pm – 3:30 pm

**Super Session: Accelerating  
Innovation in the 21st Century**

2:00 pm – 3:15 pm

**1559 – Venture Investing the  
Pharmaceutical Company Way**  
*Business Development & Finance*

2:00 pm – 3:15 pm

**2249 – Acceleration of Investor  
Interest in Digital Health**  
*Digital Health*

2:00 pm – 3:15 pm

**2274 – Innovating in Brazil: Steps  
Towards a Biotechnology Economy**  
*Emerging Opportunities in Global Markets*

2:00 pm – 3:15 pm

**1484 – Demystifying Product  
Development and Market Access  
in China and Asia**  
*Emerging Opportunities in Global Markets*

2:00 pm – 3:15 pm

**1624 – Next-Gen Antibodies: Unlocking  
a Treasure Trove of Antigen Targets**  
*Infectious Disease*

2:00 pm – 3:15 pm

**1480 – Patentable Subject Matter  
Around the World: Life Science  
Inventions in Canada, Europe, China,  
Australia and New Zealand**  
*Intellectual Property*

2:00 pm – 3:15 pm

**1560 – Achieving Successful Marketing  
Authorization for Orphan Products:  
Experiences from Both Sides of the Atlantic**  
*Orphan & Rare Diseases*

2:00 pm – 3:15 pm

**1502 – Transforming Diagnostics  
With Innovative Technologies:  
Potential and Pitfalls**  
*Personalized Medicine & Diagnostics*

*All events are open to Education & Exhibition Access and above unless otherwise noted.*

**\* Suggested events that are open to all attendees**

**★ Open to Convention Access registration and above**

**◆ Open to Convention Access & Partnering registration**

**⊕ Additional/separate registration required**



## SESSIONS & EVENTS BY DAY

### Wednesday continued

2:00 pm – 3:15 pm

**1423 – Design for Value: Clinical Development Program that Addresses Market Access Challenges**

*Value, Patient Access & Commercialization*

3:00 pm – 4:00 pm

**Digital Health Meetup**

3:30 pm – 4:45 pm

**2920 – Trends in Early Therapeutic Research and Funding—Project Initiation, Patent Filing, Licensing, and Venture Capital**

*Business Development & Finance*

3:30 pm – 4:45 pm

**2250 – Unlocking the Value in Patient Engagement**

*Digital Health*

3:30 pm – 4:45 pm

**1465 – Growth Trends and the Art of the Deal: Exploring Factors in Biopharma's Geographic Expansion**

*Emerging Opportunities in Global Markets*

3:30 pm – 4:45 pm

**2423 – Maternal Immunizations: Protecting Our Most Vulnerable Against Infectious Diseases**

*Infectious Diseases*

3:30 pm – 4:45 pm

**2234 – Small Patient Populations, Large Value Propositions: Defining and Differentiating the Value of Rare Disease Therapies**

*Orphan & Rare Diseases*

3:30 pm – 4:45 pm

**2252 – FDA Takes Charge: The Changing Regulatory Landscape for Molecular Diagnostics**

*Personalized Medicine & Diagnostics*

3:30 pm – 4:45 pm

**1537 – Modern-Day Odyssey: A Biomarker's Journey From Bench to Bedside**

*Regulatory Science*

4:00 pm – 5:00 pm

\* **Patient Advocacy Pavilion Meetup**

5:00 pm – 6:30 pm

\* **Academic & Tech Transfer Wine Social**

5:00 pm – 6:30 pm

### \* **NEW! Wednesday Exhibitor Hospitality Receptions**

This attendee favorite will take place on Wednesday, preceding the evening event. Stroll around the exhibit floor, grab a drink and a bite, and then continue the party at Reading Terminal Market (if registered for Convention Access).

### \* **“Unplugged” Pre-Party + Reading Terminal Reception**

6:30 pm - 7:30 pm

Pre-Party in Grand Hall

7:30 pm - 9:30 pm

Reading Terminal Reception  
(Adjacent to Convention Center.)

## THURSDAY, JUNE 18, 2015

8:00 am – 12:00 pm

\* **2966 – Select USA Investment Seminar**  
*Learn How to Enter the U.S. Market*  
*Special Program*

8:30 am – 12:30 pm

**2221 – Digital Health Idea Design Studio by MIT Hacking Medicine**  
*Digital Health*

9:00 am – 9:30 am

**3280 – Keynote: U.S. Response to the Ebola Outbreak and Capabilities for a Future Outbreak**  
*Infectious Disease*

9:00 am – 10:15 am

**1542 – How to Grow a Sustainable Biotech Company? Three Success Stories**  
*Business Development & Finance*

9:00 am – 10:15 am

**2278 – TTIP: Transatlantic Trade Negotiations and Opportunities for Setting New Regulatory, IP, and Other Standards for the Biopharma Industry**  
*Emerging Opportunities in Global Markets*

9:00 am – 10:15 am

**2230 – Who Has the Keys to Your IP? Protecting Against Intellectual Property Theft**  
*Intellectual Property*

9:00 am – 10:15 am

**2235 – Oncology Opening Plenary: Exciting Science in Oncology—A Year in Review**  
*Oncology*

9:00 am – 10:15 am

**2253 – Making the Case for Coverage: Issues in the Reimbursement of Personalized Medicine Products**  
*Personalized Medicine & Diagnostics*

9:45 am – 11:00 am

**1860 – After Ebola, What's Next—And What Should Be Done Now?**  
*Infectious Diseases*

10:00 am – 11:30 am

**Super Session: Riding the Bull Market: What's in Store for Biotech Dealmakers in 2015?**

10:30 am – 11:45 am

**1583 – I-Corps™ at NIH: How to Go from Idea to IP to IPO**  
*Business Development & Finance*

10:30 am – 11:45 am

**2277 – Current Perspectives on Regional Biologics Regulations in Latin America**  
*Emerging Opportunities in Global Markets*

10:30 am – 11:45 am

**1544 – Leveraging the Immune System to Cure Disease: Emerging Approaches**  
*Oncology*

10:30 am – 11:45 am

**2254 – Integrating Personalized Medicine Into Healthcare: Providers, Patients and Payers**  
*Personalized Medicine & Diagnostics*

10:30 am – 12:00 pm

\* **Job Search 2015**  
*Special Program*

11:15 am – 12:30 pm

**2258 – China and Novel Vaccine Development for Emerging Markets**  
*Infectious Diseases*

12:00 pm – 1:30 pm

**Super Session: The Next Step: How Companies Build Successful Therapeutic Franchises from the Ground Up**

12:30 pm – 1:45 pm

\* **2280 – Get Your WORLDVIEW On: 2015 Scientific American Biotech Scorecard**  
*Emerging Opportunities in Global Markets*

12:30 pm – 1:45 pm

**2279 – Biologics: Emerging Guidances and Policies and Multilateral Organizations**  
*Emerging Opportunities in Global Markets*

1:00 pm – 2:00 pm

**1474 – Managing Your Response to Activist Shareholders**  
*Business Development & Finance*

1:00 pm – 2:00 pm

**1408 – Biotech-Pharma Collaborations in Oncology Clinical Trials**  
*Oncology*

2:00 pm – 3:00 pm

+ **Resume Builder Workshop**  
*Special Program*

2:00 pm – 3:30 pm

\* **Scientific American WORLDVIEW Super Session**

3:00 pm – 4:00 pm

+ **Resume Builder Workshop**  
*Special Program*

3:30 pm – 5:00 pm

\* **International Reception**

## **Career Fair** \*

Thursday June 18

2:00 pm – 7:00 pm

Pennsylvania Convention Center  
Level 1, Hall G

POWERED BY:



Learn more at [convention.bio.org/career-fair](http://convention.bio.org/career-fair).

All events are open to Education & Exhibition Access and above unless otherwise noted.

\* Suggested events that are open to all attendees

★ Open to Convention Access registration and above

◆ Open to Convention Access & Partnering registration

+ Additional/separate registration required

Explore a universe  
of solutions in a single bound.



For a complete list of exhibitors located in each Product Focus Zone, visit [mybio.org/exhibitor](http://mybio.org/exhibitor).

BIO Process Zone



Find the latest products and services impacting the development and manufacturing chain. Don't miss presentations in the BioProcess Theater on Tuesday and Wednesday. Exhibitors include:

- AAI Pharma Services
- Catalent Pharma Solutions
- Charles River Laboratories
- Lonza
- Oncobiologics, Inc.
- Patheon

Business Services Zone



Are logistics getting in the way of your growth? Identify partners who can help you get things up and running smoothly. Exhibitors include:

- Cote Orphan
- Dohmen Life Science Services
- Kelly Services
- Morningside Translations

Contract Services Zone\*



Meet suppliers who can handle early stage research, expedite small-to large-scale manufacturing or streamline the clinical phase for you. Exhibitors include:

- AMRI
- Coldstream Laboratories
- Cook Pharmica
- GlaxoSmithKline Biopharmaceuticals
- LSNE Contract Manufacturing
- WuXi AppTec, Inc.

Discovery Zone



Explore the techniques and tools you need to develop your discovery and take it into production. Exhibitors include:

- 23andMe
- CASIS
- National Institutes of Health (NIH)
- American Association for Cancer Research

Digital Health Zone\*



Meet with companies that can help you develop and meet the demand for cost-effective, patient-centric solutions. Exhibitors include:

- Aventyn
- Clear Road Map
- Medical Avatar
- MIT Hacking Medicine
- Self Care Analytics
- Vencore

Sponsored by :



The BIO Exhibition brings together more than 1,700 exhibitors offering solutions for every stage of your project. Product Focus Zones make it easy for you to find what you need.



## Academic Zone\*



**BIO Academic Zone**  
Advancing Research  
and Drug Development

Stop by to see the displays and research posters, or hold pre-scheduled BIO One-on-One Partnering™ meetings with institutions such as:

- Northwestern University
- Rowan University
- Rutgers University
- The Children's Hospital of Philadelphia (CHOP)
- University of Delaware
- University of Pennsylvania
- University of Pittsburgh

Sponsored by:



## Innovation Zone



**BIO Innovation Zone**  
SBIR Companies



National Institutes of Health



A hot zone of opportunity. These promising new companies have received Small Business Innovation Research (SBIR) Phase II grants of \$1-3 million to engage in R&D with the potential for commercialization.

## Patient Advocacy Pavilion



**BIO Patient Advocacy Pavilion**  
Advancing Partnerships  
with Patient Advocates

Join 40+ patient advocacy and venture philanthropy organizations for vibrant networking and BIO One-on-One Partnering™ meetings. Participants include:

- ALS Association
- American Cancer Society Cancer Action Network
- JDRF
- Leukemia & Lymphoma Society
- Michael J. Fox Foundation
- National Alliance on Mental Illness
- National MS Society/Fast Forward

*Sponsored by: Amgen, Biogen, Eli Lilly and Company, Millennium: The Takeda Oncology Company, UCB, Inc.*

## BIO Member Services Pavilion



**Member Services Pavilion**

Find out how your company can start saving on goods and services through our BIO Business Solutions program. Also meet with companies like:

- Chubb Group of Insurance Companies
- FedEx Corporation
- VWR International
- and more!

\*Exhibit space still available. For a complete list of exhibitors visit [convention.bio.org/exhibit](http://convention.bio.org/exhibit).

# 2015 Exhibitor List

For an updated exhibitor list, visit [mybio.org](http://mybio.org).

As of March 25, 2015

23andMe  
2bind GmbH  
3P BIOPHARMACEUTICALS, S.L.

## A

AAI Pharma Services Corp.  
AbbVie  
Ability Pharmaceuticals  
ABIQUIF  
ABL Inc  
ABLE - India  
ABS Inc.  
Abzena  
AD VERBUM  
Advantar Labs  
Aeras  
AES Clean Technology, Inc.  
Afflogix  
Agricultural Technology Research Institute  
AIMS - Spain Executive Search in Life Sciences  
Ajinomoto Althea, Inc.  
Ajinomoto SmallPack  
Algiavax Pharmaceuticals GmbH  
Alkermes plc  
Alliance for Aging Research  
Alpha-1 Foundation  
ALS Association  
Alzheimer's Drug Discovery Foundation  
AMEGA Biotech  
American Aerogel  
American Association for Cancer Research  
American Cancer Society Cancer Action Network  
American Peptide Company, Inc.  
Amoytop Biotech  
AMRI  
Amvet Biosciences Limited  
Analytical Services Dr. Ralph Nussbaum  
Anaxomics Biotech S.L.  
ANDALUCIA BIOREGION  
Anergis  
Antares Pharma  
Anteo Technologies  
Antibody Solutions  
AntiCancer Inc.  
Aon Risk Services, Inc.  
APT  
Aragen Bioscience, Inc.  
Argentina Pavilion  
Argonne National Laboratory  
Ariana Pharmaceuticals SA  
Arizona Commerce Authority  
Arlenda SA  
ARTINVET INNOVATIVE THERAPIES  
Ascendia  
AsclepiX Therapeutics, LLC  
ASEBIO - SPANISH BIOINDUSTRY ASSOCIATION  
Aseptic Technologies s.a.  
Ash Stevens, Inc.  
Ashfield Commercial and Medical Services

Association of University Research Parks (AURP)  
Association of University Technology Managers (AUTM)  
AstraZeneca & MedImmune  
ASU Biodesign  
ASU Technology Transfer  
Atlanpole Biotherapies  
Attagene, Inc.  
Atto-Tec GmbH  
AusBiotech, Ltd  
Australia  
Australian Regenerative Medicine Institute  
Austrian Federal Economic Chamber  
Autism Speaks  
AVENTYN  
Avid Bioservices, Inc.  
Avitus Group

## B

B&C Group  
Bachem Americas, Inc.  
Balland Messe-Service GmbH  
Baltimore Development Corporation  
Barnes & Thornburg LLP  
Barrington James Limited  
Bavarian U.S. Offices for Economics Development  
Baxter Healthcare  
Bayer CropScience, Inc.  
Bayer Pharma AG  
Bayern International GmbH  
BCC Research  
BCN PEPTIDES S.A.  
BEACON BIOMEDICINE  
Belgium Pavilion  
Berlin Partner für Wirtschaft und Technologie GmbH  
BGI Tech  
BIO Clustermanagement NRW GmbH  
BIO KOREA (KHIDI)  
BIO Member Services Pavilion  
BIO Ventures for Global Health (BVGH)  
BioAdvance  
BIOBIDE  
BIOCANT  
BIOCAT  
BioCentury  
BioCep Ltd.  
BIOCOM  
Biogen Idec  
BioGenes GmbH  
BioHealth Innovation  
BIOIBÉRICA S.A.  
Bioingenium  
Biokit  
Biolog Europe  
Biologics Consulting Group, Inc.  
BioM Biotech Cluster Development GmbH  
Biomanufacturing Training & Education Center (BTEC)  
Biomedal, SL  
BIOMEVA GmbH  
BioNB  
Biondavax Pharmaceuticals Ltd.  
Bioneer Corporation  
BioNova  
Bionova Scientific, Inc.  
BioNTech AG  
BIONURE INC  
BioPark Regensburg GmbH  
BioPharm International  
BioPharmaSpec  
BioProcess Technology Consultants, Inc.  
Bioregeneration GmbH  
BIOSA  
BioSA  
biosaxony Management  
Biosidus  
BIO-SOURCING  
BioSpace  
BIOTECCanada  
Biotech Primer  
BioVectra Inc.  
Biovest International  
BioWin  
BioWorld  
BioXcel Corporation  
Bird & Bird LLP  
Bladder Cancer Advocacy Network  
Blood Centers of America  
Boehringer Ingelheim  
Biopharmaceuticals GmbH  
Boehringer Ingelheim Pharmaceuticals, Inc.  
Bone Therapeutics  
Borden Ladner Gervais LLP  
Boston Mountain Biotech  
Brainstorm Cell Therapeutics Inc.  
Brand Institute, inc.  
BRI Biopharmaceutical Research Inc.  
Bristol Myers Squibb  
BRITE  
BRTI Life Sciences  
BTG International  
Business Wire

## C

Cambridge Biomedical  
Cancer Support Community  
Carbosynth LLC  
Cardinal Health Regulatory Sciences  
CARDIO 3 BIOSCIENCES  
CAS  
Cascade Biosystems or CBI  
CASIS  
Catalent Pharma Solutions  
Catalonia Trade And Investment - Accio  
CD Diagnostics Inc  
Celltrion, Inc.  
Cerbios-Pharma SA  
Cfm Oskar Tropitzsch GmbH  
Charcot-Marie Tooth Association  
Charles River Laboratories  
CHELATEC  
Chemcon GmbH  
ChemPacific Corporation



China Pavilion  
 Choose New Jersey, Inc.  
 Chubb Group of Insurance Companies  
 C/3-Cluster  
 Citrix ShareFile  
 City Of Flagstaff  
 City of Glendale  
 City Of Maricopa  
 City Of Peoria  
 City of Scottsdale  
 Clarke, Modet & O<sup>o</sup>  
 Clarkston Consulting  
 Clean Cells  
 Clean Harbors  
 ClearRoadMap  
 Clearysynth Inc.  
 Click Therapeutics - The Leader in  
 Digital Therapeutics Solutions  
 ClinTec International  
 CMC Biologics  
 Cobra Biologics  
 Coldstream Laboratories  
 Collaborative Consulting  
 Collective IP, Inc.  
 Commissioning Agents, Inc  
 Compugen, Ltd.  
 Confederation of Indian Industry (CII)  
 Contamination Prevention Services Inc.  
 Contract Pharma  
 Cook Pharmica  
 Corden Pharma  
 Coriolis Pharma Research GmbH  
 Coté Orphan  
 ORB  
 CRC Press - Taylor & Francis Group  
 LLC  
 CREB-UPC.  
 CSM  
 CT Corp Wolters Kluwer  
 CuraVac  
 CURE  
 Cytovance Biologics Inc  
 Czech Republic

## D

DALI Medical Devices Ltd  
 DEBIOPHARM INTERNATIONAL S.A  
 Defense Threat Reduction Agency  
 (DTRA) J9CB  
 DELAWARE  
 Delaware BioScience Association  
 Delaware Biotechnology Institute  
 Delaware Economic Development  
 Office  
 DelleDonne & Associates Inc.  
 Delphi Genetics SA  
 Dentons  
 Department of Industry and Science  
 Development Center for Biotechnology  
 Diba Industries Inc.  
 Digital Health Zone  
 Dohmen Life Science Services  
 DTRM Biopharma USA  
 DV Biologics

## E

EBD Group  
 EBD Group Inc.  
 Economic Collaborative of Northern  
 Arizona

Elcam Medical Ltd.  
 ElectriCities of North Carolina, Inc  
 EMD Millipore  
 Emergent BioSolutions Inc.  
 Emerson Process Management  
 ENSINGER  
 Enterprise Lithuania  
 ePath Learning, Inc.  
 Epilepsy Foundation of America  
 Eppendorf  
 EquipNet Inc.  
 ERA Consulting Group  
 Eurogentec  
 European Commission  
 European Patent Office  
 Evaluate  
 Exemplar Genetics

**Check out BIO's  
 Headshot Lounge,  
 Located in the BIO  
 Exhibition (Hall E).**

*Sponsored by:*

**DELAWARE**  
ECONOMIC DEVELOPMENT OFFICE  
**Right Place. Right Size.**

## F

FasterCures  
 Fedex Corporation  
 FlowMetric, Inc.  
 Foamix Pharmaceuticals  
 Foley & Lardner LLP  
 Foley Hoag LLP  
 Formex LLC  
 Fortune Pharmacal Company Limited  
 Forschungszentrum Juelich GmbH -  
 Technologietransfer  
 Fox Chase Chemical Diversity Center  
 and the Pennsylvania Biotechnology  
 Center  
 Fraunhofer Gesellschaft  
 Fraunhofer Group For Life Sciences  
 Fraunhofer IGB  
 FRAUNHOFER INSTITUTE FOR  
 TOXICOLOGY AND EXPERIMENT  
 Fraunhofer IPA-Projektgruppe für  
 Automatisierung in der Medizin und  
 Biotechnologie  
 Frederick Economic Development  
 FreeMind  
 French Pavilion  
 Friends of Cancer Research  
 Frommer Lawrence & Haug LLP  
 Frontage Laboratories, Inc.,  
 FUJIFILM Diosynth Biotechnologies  
 FUNDACIÓN PÚBLICA ANDALUZA  
 PROGRESO Y SALUD

## G

G&E Biotechnology Co., Ltd  
 Gangwon Technopark  
 GANYMED Pharmaceuticals, AG  
 Gene Bridges GmbH  
 GENERIUM  
 Georgia, USA

German Pavilion  
 Germfree Laboratories  
 GeSiM mbH  
 GlaxoSmithKline Biopharmaceuticals  
 Global Delaware  
 Global Healthy Living Foundation  
 GlobalData  
 Goodwin Biotechnology, Inc.  
 GP Pharm  
 Granada Health Technology Park  
 (PTS)  
 Grifols  
 Group Novasep

## H

Harness Dickey  
 Hawaii Life Sciences  
 Health Capital Berlin-Brandenburg  
 Health Ever Bio-Tech Co., Ltd.  
 Health Science Communications  
 Heraeus Precious Metals GmbH &  
 Co. KG  
 Hessen Trade & Invest  
 HGF Intellectual Property Specialists  
 High Impact, Inc.  
 Hinoman LTD  
 HiQScreen  
 HISTOCELL CELL THERAPY  
 HOET PELAEZ CASTILLO & DUQUE  
 Holy Stone Healthcare Co., Ltd.  
 Hong Kong Baptist University  
 Knowledge Transfer Office  
 Hong Kong Biotechnology  
 Organization  
 Hong Kong Science and Technology  
 Parks Corp.  
 Hong Kong Trade Development  
 Council  
 Hospira One 2 One®  
 Hsinchu Science Park, Taiwan  
 Hubei Pavilion of China  
 HYGLOS GmbH

## I

IOEX Spain Trade and Investment  
 IDT Biologika GmbH  
 IGI Technologies  
 IIS Innovative Injektions-Systeme  
 GmbH & Co. KG  
 ILS  
 ImmigrationOptions.com  
 Immunomic Therapeutics, Inc  
 Immunxperts  
 IMS Health  
 In-Cell-Art  
 INCYTE  
 Indiana Health Industry Forum  
 Infectis Biosciences  
 Influent / Texas FreshAIR at UT  
 System  
 Informa  
 Infusion Pharma Consulting LLC  
 INNOPROT  
 Innovation Zone  
 Institute of Industrial Organic  
 Chemistry Branch Pszczyna  
 Integra Holdings  
 Integrity Bio  
 Intrin Biotechnology, Inc  
 inVentiv Health  
 Invest Northern Ireland

## Exhibitor List continued

Iowa Bio/Iowa Economic Development Authority  
IPS-Integrated Project Services, Inc.  
IRB BARCELONA  
Iris Biotech GmbH  
ISK Ltd  
Israel - MATIMOP  
Italian Trade Commission  
Italy Pavilion

### J

Janssen Biotech, Inc.  
Japan External Trade Organization (JETRO)  
JDRF  
Jeilmedix Pharma  
Jeiven Pharmaceutical Consulting, Inc.  
Johnson & Johnson  
Joulé Clinical and Scientific Staffing  
Jubilant HollisterStier  
Julabo USA, Inc.

### K

KAHR Medical  
Kamat Pharma  
KBI Biopharma, Inc.  
Kelly Services, Inc.  
Kemwell Biopharma  
Kentucky Pavilion  
Keosys  
Kerry  
KinderPharm LLC  
KNAUER Wissenschaftliche Geräte GmbH  
Knobbe Martens  
Korea Biotechnology Industry Organization  
Korea Drug Development Fund  
Korea Institute of Oriental Medicine  
Korea Research Institute Of Bioscience And Biotechnology  
KROMITE

### L

Lab Support  
LABORATORIOS SALVAT S.A.  
LABORATORIOS GEBRO PHARMA  
LabWare Inc  
Lampire Biological Laboratories, Inc.  
Lathrop & Gage LLP  
Lee's Pharmaceutical Holdings Ltd.  
Leidos Health  
Leukemia & Lymphoma Society  
Licensing Executives Society (LES)  
Life Science Connect  
Life Sciences Greenhouse of Central PA  
Life Sciences Queensland Ltd  
LINDE  
LIOPHARMA  
Loeb & Loeb LLP  
Longly biotechnology (wuhan) Co., Ltd  
Lonza  
LSNE Contract Manufacturing  
Lumenigix  
LUNGEVITY  
Lyophilization Technology, Inc.

### M

Malaysia Pavilion  
Marks & Clerk Intellectual Property Services  
Maryland (BioMaryland)  
MassBio  
MASTHERCELL S.A.  
Masy Systems, Inc.  
Matan Companies - Riverside Research Park  
McDonnell Boehnen Hulbert & Berghoff LLP  
McKenna Long & Aldridge LLP  
Medchembio  
MedGenome, Inc.  
Medicen Paris Region  
Medix Scientific  
Meissner Filtration Products  
Melanoma Research Alliance  
MENARINI BIOTECH  
Merck  
MFG Tray Company  
Michael J. Fox Foundation  
Michigan Economic Development Corp  
Ministerium für Wirtschaft, Klimaschutz, Energie und Landesplanung Rheinland-Pfalz  
Minnesota - State of Minnesota  
Minnesota Department of Employment and Economic Development  
Mitelos Bioscience  
Montana Bioscience Alliance  
Montgomery College Hercules Pinkney Life Sciences Park  
Montgomery County Department of Economic Development  
Morningside Translations  
MorphoSys AG  
MPI Research  
mtibio  
MultiLing  
Multiple Myeloma Research Foundation  
Myotonic Dystrophy Foundation

### N

NAMI  
NANO LIVE  
National Alliance for Caregiving  
National Bone Health Alliance  
National Institutes of Health (NIH)  
National Jewish Health  
National MS Society/Fast Forward, LLC  
National Program for Intelligent Electronics Bridge Office, Taiwan  
National Psoriasis Foundation  
Nature  
NC BioNetwork  
NCATS BrIDGs and TRND Programs  
NDRI  
Netherlands Pavilion  
Neuron Bio  
NEUROSERVICE  
Nevada Governor's Office of Economic Development  
New Jersey  
New York State Pavilion  
Nitto Denko Technical Corporation

NOF CORPORATION  
NORD  
Nordic Patent Institute  
North Carolina Biotechnology Center  
Novadip Biosciences SA  
Novartis Pharmaceuticals Corporation  
Novellusdx  
NRW-International GmbH  
Nutrasource  
N-Zyme BioTec GmbH

### O

OBI Pharma, Inc.  
Office Depot  
Oficina Ponti, SLP  
Ohio - CTSA Consortium  
Ohio Clinical Trials Collaborative (OCTC)  
Oklahoma BIO  
Olympus  
Oncobiologics, Inc.  
ONCOMATRYX  
ONENESS BIOTECH CO., LTD.  
OnPoint CRO  
Ontario, Canada  
OPERON S.A.  
Opportunity Houston  
Oramed Pharmaceuticals  
Orrick Herrington & Sutcliffe LLP  
Oryzon Genomics, S.A.  
Otto Trading Inc  
Ovarian Cancer National Alliance

### P

PA Bio  
PAION AG  
Palobiofarma  
Papers  
Paragon Bioservices, Inc.  
PARC CIENTÍFIC DE BARCELONA  
Park IP Translations  
Parkinson's Action Network  
partnering360®  
PATENTICA  
Patheon  
Patient Advocacy Pavilion  
PendoTECH  
Pennsylvania Bio  
Pennsylvania State University  
Pepper Hamilton LLP  
Pfenex Inc.  
Pfizer Inc.  
Phage Consultants  
Pharma Targeting  
Pharmaceutics International, Inc  
PharmaCircle LLC  
Pharmaessentia Corp.  
Pharmica Consulting  
Phelan-McDermid Syndrome Foundation  
Philadelphia Convention and Visitors Bureau (PHLCVB)  
Philips Respiration  
Pillsbury  
Piramal Healthcare  
PLASMA BIOTECH  
POLPHARMA BIOLOGICS  
PolyPeptide Group  
Polypid Ltd.

Potter Anderson & Corroon LLP  
 Poznan Science and Technology Park  
 PROALT  
 Promethera Biosciences  
 ProMexico  
 ProTecs  
 Protein Sciences Corporation  
 PROTEODESIGN SL.  
 PSU Milton S. Hershey College of  
 Med OTD  
 Puerto Rico Pavilion  
 Puritan Products, Inc.  
 PYRAMID Laboratories, Inc.

South Africa  
 South Dakota Governor's Office of  
 Economic Development  
 Spain Trade Commission  
 SPANISH NATIONAL RESEARCH  
 COUNCIL (CSIC)  
 SPECIPIG  
 Spectrum Laboratories, Inc.  
 SPHERIUM BIOMED  
 SPRI - BioBasque (The Basque  
 Bioregion)  
 Springer  
 St.Baldrick's Foundation  
 STEMTEK THERAPEUTICS

TRB Chemedica International SA  
 Trifermed  
 TriNet

## U

UCB SA  
 UKTI  
 Unilife Medical Solutions  
 UNIVEROCELLS  
 Universal Medica  
 University City Science Center  
 University of Maryland, Baltimore  
 University of North Carolina General  
 Administration  
 University of Notre Dame  
 University of Pennsylvania  
 University of Pittsburgh  
 University of the Sciences

## V

Vall d'Hebron Research Institute  
 (VHIR)  
 Valneva  
 Vancive Medical Technologies  
 Vascular VBL Therapeutics  
 VAXDYN  
 Venable LLP  
 Vencore, Inc.  
 Vetter Pharma International GmbH  
 VGXI  
 Vivo Science GmbH  
 VWR International

## W

Wacker Biotech GmbH  
 Wake County Economic  
 Development  
 Wake Forest Innovations  
 Wallonia Brussels International  
 Wallonia Region Technology  
 Development  
 WBC Incubator  
 Wenderoth  
 West Virginia Bioscience Association  
 WHEATON  
 Wista-Management GmbH  
 Women in Bio  
 World Courier, Inc.  
 Worldwide Clinical Trials  
 Worthington Biochemical  
 WTS Patent Attorneys  
 Wuhan Huatai Biological Technology  
 Co., Ltd.  
 Wuhan Humanwell Pharmaceutical  
 Co., LTD  
 Wuhan Kangzemyn Bio-technology  
 Co., Ltd  
 Wuhan Pharma Vally Bio-engineering  
 Co., Ltd  
 Wuhan Togo Biotechnology Co., Ltd  
 WuXi AppTec, Inc.

## X

Xbrane Bioscience  
 Xikang (wuhan) Biopharmaceutical  
 Co., Ltd  
 XTL Biopharmaceuticals Ltd.

## Z

Zenith Technologies

**BIO Metropolis (Hall F) is a hot spot at BIO 2015! Explore the exhibits, stop to grab a Philly Cheesesteak, and make your way to the Digital Health Zone App Bar for a live demo.**



## Q

QMAB  
 Quasys Consult  
 Quebec  
 Questel

## R

RARE|Global Genes Project  
 RASopathies Network USA  
 RED BAG SOLUTIONS  
 Rees Scientific  
 Regulatory Compliance Associates Inc.  
 Rentschler Biotechnologie GmbH  
 Richter-Helm BioTec GmbH & Co. KG  
 Roche Tissue Diagnostics  
 Rockville Economic Development, Inc.  
 R-Pharm

## S

Samsung Biologics  
 Sandoz GmbH  
 Sanifit  
 Sarcoma Foundation of America  
 Sathguru Management Consultants  
 Saul Ewing LLP  
 Science/AAAS  
 SCIENION AG  
 Scottish Development International  
 SCYNEXIS INC.  
 SecureDocs, Inc.  
 Selexis SA  
 Self Care Catalysts Inc.  
 SensoScientific, Inc.  
 Seoul Metropolitan Government  
 ShareVault  
 Sharp Packaging Services  
 Sheltagen Medical Ltd  
 Sidus BioData  
 Simpson Biotech Co., Ltd.  
 Site Selection  
 SJT MOLECULAR RESEARCH  
 SmartBrief, Inc.  
 SOM BIOTECH SL  
 Source BioScience

Sterne, Kessler, Goldstein & Fox  
 Swiss Biotech Association  
 SWISS Pavilion  
 Switzerland Global Enterprise  
 Synchrogenix  
 Synolyne Pharma

## T

TaiGen Biotechnology Company, Ltd  
 Taiwan Liposome Company, Ltd. (TLO)  
 Taiwan Pavilion  
 Takeda Pharmaceuticals International  
 Targos Molecular Pathology GmbH  
 Tech Council of Maryland  
 Technologiepark Heidelberg, GmbH  
 technology transfer heidelberg GmbH  
 Teh Seng Pharmaceutical Mfg. Co., Ltd.  
 TEMIS Deutschland GmbH  
 TERACLON  
 Tergus Pharma  
 TetraLogic Pharmaceuticals  
 Corporation  
 Teva Pharmaceuticals  
 Texcell - North America, Inc.  
 Thailand Pavilion  
 The Children's Hospital of Philadelphia  
 Research Institute  
 The Chinese University of Hong Kong  
 The Hamner Institutes for Health  
 Sciences  
 The Hong Kong Polytechnic University  
 The Pittsburgh Life Sciences  
 Greenhouse  
 Therapure Biomanufacturing  
 Thermo Fisher Scientific  
 THEVAX GENETICS VACCINE CO.,  
 LTD.  
 Thomas A. Little Consulting  
 Thomas Horstemeyer LLP  
 Thompson Coburn LLP  
 Torrey Insights  
 Town of Oro Valley  
 Toxikon Corporation  
 Trade Commission of Spain  
 TransPerfect



**Don't miss the  
premier bioscience  
recruiting event  
of the year!**

## **Attend the BIO Career Fair:**

**Thursday, June 18, 2:00 pm – 7:00 pm**  
**Pennsylvania Convention Center, Hall G**

Co-located with the 2015 BIO International Convention, the BIO Career Fair is a must-attend event for those seeking career advancement opportunities, professional development resources and access to the industry's top employers.

- Connect with recruiters and circulate your resume among corporate HR staff who are looking to fill positions and expand their talent pool.
- Explore job opportunities in business development, research, finance, marketing and more.
- Establish new contacts and network with professionals from all industry segments.

**The BIO Career Fair is FREE to attend and signing up is easy at [jobs.bio.org](http://jobs.bio.org)—**

- Pre-register or bring a hard copy of your resume/CV onsite (resume required for admittance).
- Upload your resume/CV to our Bio Jobs database.
- Fill out your personal profile for employers to view.

---

The BIO Career Fair is powered by Bio Jobs, the premier job board hosted by the industry's largest global trade association, BIO.

---

**Can't wait until June?**  
**Find opportunities year-round at [jobs.bio.org](http://jobs.bio.org).**

*Learn more at [convention.bio.org/careerfair](http://convention.bio.org/careerfair).*

 **Career Fair**

June 18, 2015, 2:00 pm – 7:00 pm  
Pennsylvania Convention Center

POWERED BY:



CO-LOCATED WITH:







# One **SUPER** city

Welcome to Philadelphia and the tri-state region of **Pennsylvania, New Jersey** and **Delaware**—home to 80% of the U.S. pharmaceutical industry.

## Travel to BIO 2015

Philadelphia is easily accessible by rail and by air. Philadelphia's historic 30th Street Station is located just over a mile from the Pennsylvania Convention Center and Philadelphia International Airport is just seven miles away, with quick travel to the center via taxi or public transit.

- Philadelphia is approximately a 90-minute train ride from New York City and Washington, D.C.
- With 1,400 flights daily to Philly and other nearby airports, the city is easily accessible by air.

## Hotel Information

*For a full list of hotels, visit [convention.bio.org/book\\_housing](http://convention.bio.org/book_housing)*

- BIO guarantees the lowest rates with automatic rate adjustment on your reservation
- Top-notch service and support before, during and after the event



## Hotel Reservations

BIO is pleased to be partnering with Travel Planners as our official, exclusive housing provider for the BIO International Convention. Your hotel reservations, personal data and privacy are protected and secure. Accommodation requests are processed on a first-come, first-served basis and are based on availability.

There are three ways to book through BIO:

**Online** [convention.bio.org/book\\_housing](http://convention.bio.org/book_housing)

**Email** [BIO@tphousing.com](mailto:BIO@tphousing.com)

**Phone** *Reserving up to 9 rooms:*

866-940-0941 (U.S./Canada)

212-532-3895 (International)

*Reserving 10 rooms or more:*

866-940-0942 (U.S./Canada)

212-532-9254 (International)

## BIO Shuttle Buses

We will offer complimentary shuttle bus service to official BIO hotels that are not walkable to the Convention Center. Additionally, BIO will offer transportation from the Convention Center and BIO hotels to the Monday Kickoff Concert. Visit [convention.bio.org/shuttleschedule](http://convention.bio.org/shuttleschedule) for more information and shuttle schedules.

# Get a laser-focused look inside exciting life science centers.

Explore the life sciences community of the tri-state area surrounding Philadelphia on an exclusive, behind-the-scenes tour!

*Organized in cooperation with the Commonwealth of Pennsylvania, Select Greater Philadelphia, the City of Philadelphia, the State of Delaware and the State of New Jersey.*

## **SUNDAY, JUNE 14**

### **RESEARCH AT RUTGERS: BEHIND THE SCENES AT THE STATE UNIVERSITY OF NEW JERSEY**

Go behind the scenes at Rutgers University and learn how collaboration leads to discovery. Tour the world renowned RUCDR Infinite Biologics and Rutgers Continuous Pharmaceutical Advanced Manufacturing Laboratory. Engage in conversations with Rutgers researchers and faculty over lunch and learn about opportunities for collaboration at one of the nation's top research universities.

## **MONDAY JUNE 15**

### **THE CAVE, CORIELL AND CAMDEN**

Home to cutting-edge research, South Jersey Technology Park at Rowan University houses 16 sponsored research labs. Tour the labs and the showpiece of the Technology Park, the CAVE®, a 100-cubic-foot virtual reality (VR) environment in which teams conduct detailed—and cost-effective—research. Then take a short ride to Camden to visit Coriell Institute, a world leader in biobanking, induced pluripotent stem cells and personalized medicine.

### **FROM SHIPS TO RESEARCH, HOW THE PHILADELPHIA NAVY YARD TRANSFORMED TO A 21ST CENTURY HUB FOR PHARMA**

Take a driving tour of the Philadelphia Navy Yard and meet with established pharmaceutical companies and rising stars—many with international roots—to learn about their experiences in choosing to grow in Philadelphia. The Navy Yard is a 1,200-acre dynamic urban development and centrally-located waterfront business campus committed to smart energy innovation and sustainability.

### **GETTING YOUR FOOT IN THE DOOR: INVESTMENT AND RESOURCES SUPPORTING HEALTH IT IN PHILADELPHIA**

Experience an innovative work space supporting a range of life sciences companies. Join a discussion with local leaders highlighting existing support in digital health. Learn about available funding for foreign companies.





## Regional Hosts:



### **MONDAY JUNE 15, *continued***

#### **THE NEXT PHASE: HOW INSTITUTIONAL ANCHORS LOOK TO STARTUPS FOR COLLABORATION**

Tour the University City neighborhood and participate in an equipment tour at a leading international biomedical research institute. Speak with local institutional leaders about their approach/mission and the international partnerships they are setting up. University City is home to the Penn and Drexel campuses, the Wistar Institute, Children's Hospital of Philadelphia, 30th Street Station and the University City Science Center.



#### **DON'T MISS THIS SPECIAL PROGRAM**

**MONDAY, JUNE 15**

**3:30 pm – 5:00 pm**

Innovation and Entrepreneurship Trends Catalyzing the Greater Philadelphia Life Science Ecosystem & Reception

### **FRIDAY, JUNE 19**

#### **DELAWARE: DEVELOPMENTS AND OPPORTUNITIES IN TRANSLATIONAL MEDICINE** *(Morning Half-Day Tour)*

Join industry experts at the University of Delaware's STAR CAMPUS to explore innovations in translational medicine and cancer research in the State. The morning's events include an exclusive first look at the facility's new state-of-the-art wet lab incubator space, a roundtable discussion of the latest developments and opportunities for moving research from bench to bedside, and a meeting with Governor Jack Markell's business concierge team to learn how to establish operations in the U.S.

For more information and to R.S.V.P. visit  
**[convention.bio.org/tours](http://convention.bio.org/tours)**

# Meet BIO's Everyday **SUPER** heroes

Members of the biotech community nominated their best and brightest colleagues who are striving to heal, fuel and feed the world through groundbreaking innovation. Join us at BIO 2015 and meet this impressive group of finalists!

## PATIENT/PATIENT GROUP



**Kathleen A. Arntsen**  
*Advocate*



**Ron Bartek**  
*Advocate*



**Nicole Boice**  
*Founder, CEO,  
Global Genes*



**Pat Furlong**  
*CEO, Parent Project  
Muscular Dystrophy*



**Emily Whitehead**  
*Patient*

## PHARMA/BIOTECH



**Neal & Louisa Carter**  
*Founders,  
Okanagan  
Specialty Fruits Inc.*



**J. Joseph Kim**  
*President & CEO,  
Inovio  
Pharmaceuticals*



**Bernard Muller**  
*Chief Business  
Officer & Founder  
Treeway*



**Melinda Richter**  
*Head of Jlabs,  
Johnson &  
Johnson  
Innovation*



**George Savage**  
*Chief Medical  
Officer, Proteus  
Digital Health*

## UNIVERSITY/RESEARCH INSTITUTION



**Gregory Crawford**  
*Dean, College of  
Science, University  
of Notre Dame*



**Anne S. De Groot**  
*CEO/CSO,  
Epivax, Inc.*



**Cynthia Kramer**  
*Executive  
Director, SCOPE  
Missouri*



**Stephen K. Klasko**  
*President and CEO,  
Thomas Jefferson  
University and  
Jefferson Health  
System*



**Sanjay Balkrishna Jadhao**  
*Associate Professor,  
Senior Scientist,  
ARS (EX), Central  
Institute of Fisheries  
Education, Mumbai*

## TinySuperheroes

Don't be fooled by the name—this organization has a *big* mission to empower extraordinary kids as they overcome illness or disability. For every cape sold, a second cape is donated to an amazing TinySuperhero!

To learn more about their mission or to donate, visit them in the BIO Metropolis (Hall F).





## The most powerful industry gathering— tailored for your business.

Customize and maximize your BIO 2015 experience with various registration packages and offerings.



- Find partners at warp speed with Convention Access & Partnering.**  
*Includes:* Access to the new BIO One-on-One Partnering™ System and the BIO Business Forum, plus all the features listed in #2, #3 and #4.

- Forge powerful connections with Convention Access.**

*Includes:* Access to Keynote Luncheons, Monday Kickoff Concert and Wednesday Reading Terminal Reception, plus all features listed in #3 and #4.

- Take advantage of super smart sessions with Education & Exhibition Access.**

*Includes:* Access to Education Sessions in 16 tracks, Super Sessions, Special Programs, and all the features listed in #4.

- Discover a universe of solutions with Exhibition Access.**

*Includes:* Access to 1,700+ leading suppliers and networking on the exhibit floor.

[convention.bio.org/register](http://convention.bio.org/register)

	1.	2.	3.	4.
	Convention Access & Partnering	Convention Access	Education & Exhibition Access	Exhibition Access
Registration Fees	\$2,299 members \$2,999 non-members	\$1,299 members \$1,699 non-members	\$599 members \$699 non-members	\$199 members \$399 non-members
Access to BIO Exhibition and BIO Metropolis (Tuesday - Thursday)	✓	✓	✓	✓
Access to the BIO Business Forum & NEW BIO One-on-One™ Partnering (Tuesday - Thursday)	✓			
Access to Exhibitor Booth Partnering (Tuesday - Thursday)	✓			
Monday Kickoff Concert: The Roots, Boys II Men, Kool & The Gang	✓	✓		
Wednesday Reading Terminal Reception	✓	✓		
Tuesday Keynote Featuring Tom Brokaw	✓	✓		
Wednesday Keynote Featuring Dr. Eric Topol	✓	✓		
7+ High-level Super Sessions	✓	✓	✓	
16 Session Tracks	✓	✓	✓	
BIO Business Forum Company Presentations	✓	✓	✓	✓
BIO Exhibitor Hospitality Receptions on Wednesday	✓	✓	✓	✓
BIO Career Fair (for job seekers)	✓	✓	✓	✓

Premier  
Networking  
& High-Profile  
Education

# MEDIA & ASSOCIATION PARTNERS

## Premier Plus Media Partners

**BioProcess**  
INTERNATIONAL



THOMSON REUTERS™

## Premier Media Partners



**BioCentury**™



BIO PROCESS ONLINE

**FierceBiotech**  
THE BIOTECH INDUSTRY'S DAILY MONITOR

**informa**

Life Science  
**Leader**

nature publishing group **npg**

**WIB**  
Women In Bio

## Media Partners

 **Creating Communities of Innovation**  
ASSOCIATION OF UNIVERSITY RESEARCH PARKS



**BioMedTracker**  
DRUG INTELLIGENCE PLATFORM

**BioPharm** INTERNATIONAL

**biotechPrimer**  
Industry Knowledge Delivered

**BioSpectrum**  
the business of biopharmaceuticals

 **DATAMONITOR**  
Healthcare

**Drug Delivery**  
including SPECIALTY PHARMACEUTICALS

**fDiMagazine**  
THE BUSINESS OF GLOBALISATION

**FierceBiotechIT**

**FiercePharma**

**insights**

**IN VIVO**  
LIFE SCIENCE & PHARMACEUTICALS

Ideas, energized.™



**Larta Institute**  
20 Years of Innovation



**Licensing Executives Society**  
(U.S.A. and Canada), Inc.

**LSIPR**  
LIFE SCIENCES INTELLECTUAL PROPERTY REVIEW

**MIT Technology Review**

**nature biotechnology**

**Pharmaceutical Technology**  
Meeting Development & Manufacturing

**PharmaVOICE**

*"The Pink Sheet"*

**SCRIP**  
Intelligence

**Bio SmartBrief**  
News for the biotechnology industry

**CTIA Super Mobility 2015**  
in partnership with Microsoft

**WIPR**  
WORLD INTELLECTUAL PROPERTY REVIEW

 **Wireless Life Sciences Alliance**

**Follow Convention news coverage at  
[convention.bio.org/biotechnownews](http://convention.bio.org/biotechnownews).**

# Company Presentations

Learn the breadth and depth of the latest biotechnology innovations. See leaders of companies share progress updates and partnering goals with a new presentation every 15 minutes. *Open to all attendees.*

## LEVEL 2, EXHIBIT HALL B

### Company Presentation Hours:

**Tuesday, June 16, 9:00 am – 5:00 pm**

**Wednesday, June 17, 9:00 am – 5:00 pm**

**Thursday, June 18, 9:00 am – 4:00 pm**

Applications to present  
are still being accepted:  
**[convention.bio.org/  
company-presentations](http://convention.bio.org/company-presentations)**

***Presenting Companies as of April 10, 2015.  
See the latest company list in myBIO.***

AcelRx Pharmaceuticals, Inc.  
Actinobac Biomed, Inc.  
Amarantus BioScience Holdings, Inc.  
Amphera BV  
Anergis  
Apex Therapeutics  
Avisa Pharma Inc  
BCN Peptides S.A.  
Benitec Biopharma  
Bespak  
Bionomics Limited  
CASI Pharmaceuticals  
CEL-SCI Corporation  
Celator Pharmaceuticals, Inc.  
Chugai Pharmaceutical Co., Ltd.  
ContraVir Pharmaceuticals, Inc.  
Critical Outcome Technologies Inc.  
DelMar Pharmaceuticals, Inc.  
Dipexium Pharmaceuticals, Inc.  
DM Bio  
Enable Injections LLC  
ETX Pharma, Inc  
GenSpera, Inc.  
Grünenthal GmbH  
Haisco Pharmaceutical Group Co., Ltd  
Hansa Medical AB  
Highland Therapeutics Inc.  
Hovione, LLC  
Immunovo BV  
Inflection Biosciences Ltd  
Inovio Pharmaceuticals  
Institute of Dynamic Systems  
Isarna Therapeutics  
KaloBios Pharmaceuticals, Inc.  
Luzitin, S.A.  
Makindus Inc

Marina Biotech, Inc.  
Maverix Biomics, Inc.  
MaxCyte, Inc.  
Milestone Pharmaceuticals Inc.  
Mirna Therapeutics  
Molecular Templates  
NeoStem, Inc.  
Neovacs  
Novogen Limited  
Ocugen, Inc.  
Ohmx Corporation  
OncoSec Medical, Inc.  
Original BioMedicals Co., Ltd.  
Pfenex Inc.  
PlasmaTech Biopharmaceuticals, Inc  
Probiobdrug AG  
Provectus Biopharmaceuticals, Inc  
Quantum Pharmaceuticals LLC  
RedHill Biopharma  
Relburn-Metabolomics, Inc  
Relmada Therapeutics  
Resverlogix Corp.  
Selvita S.A.  
Silver Creek Pharmaceuticals, Inc  
Skyepharm  
Synaerion Therapeutics, Inc.  
Synta Pharmaceuticals Corp.  
Teijin Pharma Limited  
Tetraphase Pharmaceuticals  
Theralase Technologies Inc.  
Titan Pharmaceuticals, Inc.  
Ube Industries, Ltd.  
Vetter Pharma International GmbH  
Wacker Biotech GmbH  
Wake Forest Innovations  
Zafgen, Inc





# **SUPER**charge your BIO experience.



1201 Maryland Avenue, SW  
Suite 900  
Washington, DC 20024  
[bio.org](http://bio.org)

Join 15,000+ biotech professionals from around the globe  
in Philadelphia this June.

- 2,500 CEOs
- 65 countries represented
- All industry markets

See a list of who's attending at [convention.bio.org/attend](http://convention.bio.org/attend).



**BIO** International  
Convention

*The Global Event for Biotechnology*

Convention: June 15-18, 2015

Exhibition & Partnering: June 16-18, 2015

Pennsylvania Convention Center

Philadelphia, PA



Register today at [convention.bio.org](http://convention.bio.org)