

3000 Series

3300 Water MTU

METER TRANSMISSION UNIT

Delivers two-way communication and a time-synchronized network to provide a utility with a snapshot of system water consumption at a single point in time.

The 3300 water MTU uses the powerful STAR Network RF technology to transmit hourly, interval usage data, and two-way communication to the utility. The MTU supports up to 8-digit registers and delivers time-stamped reads on a time-synchronized network, allowing for advanced water distribution management.

Time Synchronization

The 3300 water MTU features time synchronization to ensure that all system clocks are set to the same time. This allows a utility to take a complete system read and use the data to reconcile the amount of water entering the system to the billable water that is consumed, thus identifying the probability of system leaks.

Models

3321-012-RB	Pulse, single-port MTU
3322-012-RB	Pulse, dual-port MTU
3321-012-DB	Encoder, single-port MTU
3322-012-DB	Encoder, dual-port MTU
3321-012-RBW	Pulse, single-port MTU with extended range
3322-012-RBW	Pulse, dual-port MTU with extended range
3321-012-DBW	Encoder, single-port MTU with extended range
3322-012-DBW	Encoder, dual-port MTU with extended range



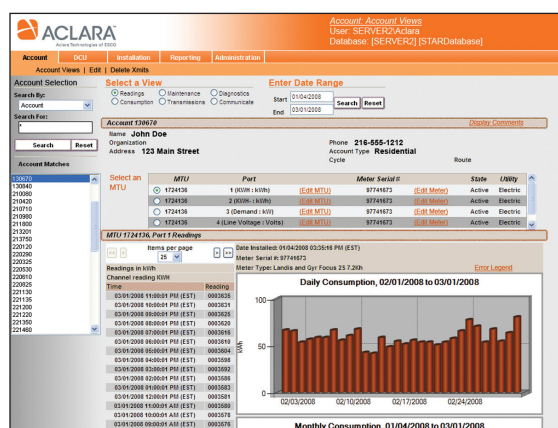
- Delivers two-way communication
- Captures hourly meter data
- Provides system-wide time synchronization
- Supports up to 8-digit registers
- Maintains a 20-year permanent battery
- Operates over FCC-licensed radio frequencies

Hourly Reads

The 3300 water MTU delivers hourly, time-stamped reads, providing detailed information about water usage and identifying anomalies such as potential leaks and meter tampering.

System Data Support

The STAR Network system provides full data support from the meter to your utility office. The system's Network Control Computer (NCC) manages and searches MTU data, tracks MTU installations, configures system settings and user roles, and creates reports to monitor MTUs in logical groups or by individual accounts.



NCC Reports

- Duplicate meter serial number request
- Duplicate MTUs report
- Reception report
- Tamper report
- Total consumption
- Zero consumption
- Missing reads
- MTU:DCU redundancy

Specifications

Network type	Two-way ¹
Transmit/receive frequency	450-470 MHz (FCC licensed)
Antenna	Internal
Installation locations	Interior wall mount, exterior wall mount, pit/vault ²
Read interval	Hourly—top of the hour readings default
Transmit interval	Four times per day default
Inputs	Single or dual
Wire length	12 feet - 22 AWG solid wire
Battery life	20 years ^{3,4}
End point to end point time difference	< 1 min
Physical characteristics	6.38" W x 4.25" H x 1.44" D
Weight	1 lb
Color	Gray
Operating temp range	-30°C to +70°C
Operating humidity	0% - 100% condensing
Transmit power options	Standard and extended range available
Approvals	FCC part 90 : Industry Canada RSS-119
Warranty	20 years ⁵
Meter compatibility	All major manufactures of water meters
Network topology	STAR Network
Network compatibility	Aclara DCU IIJ
Handheld interface	Windows Mobile handheld
Meter interface	Pulse or encoder
Data resolution	4-8 digits ⁶
Maximum meter pulse frequency	Three pulses per second ⁷

Notes:

- 1: Two-way communication for time synchronization and time management
- 2: Pit/Vault installation under non-metallic lid
- 3: Battery life is stated at default settings
- 4: Standard range
- 5: Refer to Aclara standard warranty for details
- 6: Reports all digits that are electronically available from register
- 7: Pulse input only

Specifications are subject to change without notice.

Aclara

30400 Solon Road, Solon, Ohio 44139 | P: 800.969.1057 | F: 440.528.7199
star@aclara.com | www.Aclara.com