

SAFE | ECONOMIC | AUTOMATED | EFFICIENT | SIMPLE | COMPACT

Complete On-Site Disinfecting Solution:

- **CONSISTENT ON DEMAND PRODUCTION**
- **COMPATIBLE WITH MANY SALT TYPES**
- **INTEGRATED COMPACT DESIGN**
- **AUTOMATIC OPTIMIZED SALINITY**
- **EASY, CLEAN IN PLACE MAINTENANCE WITH NO REMOVABLE PARTS**
- **LOW OPERATING COSTS**
- **LOW COST, EASY-TO-REPLACE PARTS**

SCIENCO® SciCHLOR® Sodium Hypochlorite Generator with SciCELL® technology is a fully integrated, simple, and compact designed system to **SAFELY** and **EFFICIENTLY** make chlorine on demand. Using a recirculation method to concentrate a brine solution, the SciCHLOR® system can produce up to a 0.8% strength hypochlorite [below the hazardous material threshold of 1%].

The SciCHLOR® System includes integral brine tank(s), chlorine storage tank(s), control panel, multi-pass SciCELL® unit, and recirculation pump to allow the system to **AUTOMATICALLY** run at the optimum salinity and increase power efficiency. The design of the SciCELL® creates a uniform chemical reaction, which extends the cell life.



Internationally recognized for quality products and top-notch field services, Scienco/FAST is a manufacturer of innovative, proven solutions for marine sewage devices, water treatment systems, biological tablets, and other industrial technologies.

To Order or for more information on **Scienco®** products:

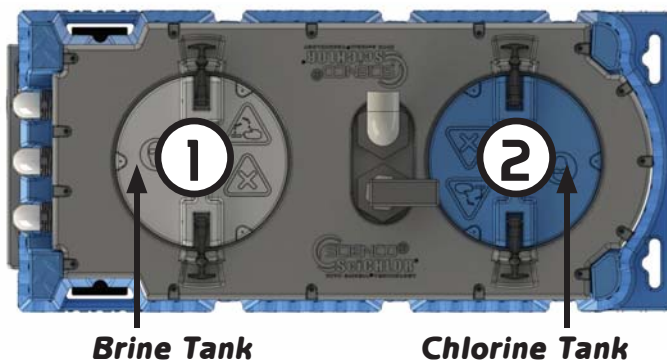
Toll-free (866) 652-4539 or call (314) 756-9300

w: www.sciencofast.com | e: solutions@sciencofast.com

© 2013 Bio-Microbics, Inc. All Rights Reserved. Scienco, FAST, SciCHLOR, and SciCELL are registered trademarks.

Sodium Hypochlorite Generating System

The Scienco® SciCHLOR® sodium hypochlorite generator features SciCELL® system uses a recirculating method to provide minimal operator attention and consistent chlorine strength. The Scienco® SciCHLOR® sodium hypochlorite generator maintains effective, reliable disinfection at an affordable cost with long SciCELL® life and easy maintenance.



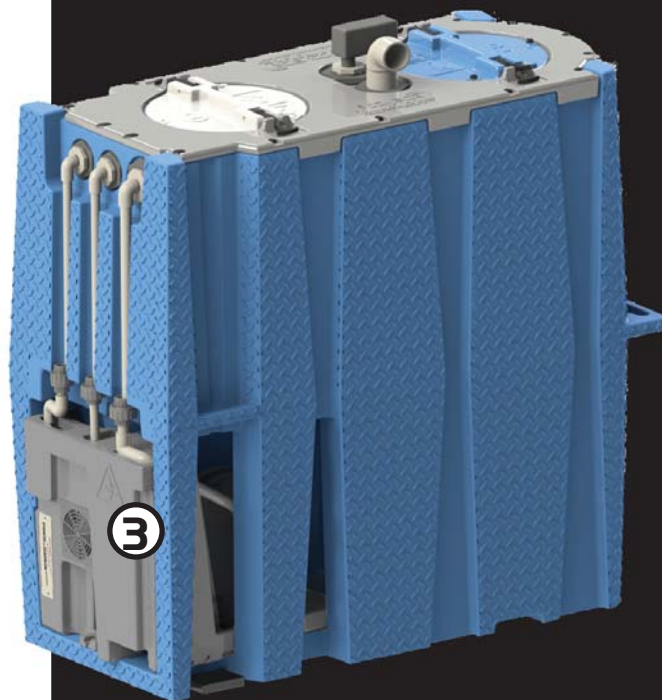
HOW IT WORKS: Hypochlorite is generated through a balance of brine and is dependent on solution consumption. The system creates 2%-13% salinity - 8% optimum brine for the automatic production of chlorine.

- 1.) Connect to a water source and set the pump to "AUTO". Add salt in the brine tank to reach salt water saturation. Turn "ON" power switch.
- 2.) Chlorine production will begin immediately.
- 3.) The SciCELL® unit and pump recirculates the hypochlorite solution. After ~5 hours, the solution will have reached optimum concentration of desired strength. As the chlorine is used, the water will automatically refill the brine tank. If no solution is used, the system will shut off to save power.

SciCHLOR® Sodium Hypochlorite Generator

Models	Hypochlorite Capacities	Dimensions (in)
SciCHLOR 1.0	10 LB (4.5 kg)	64 x 26 x 56
SciCHLOR 2.0	20 LB (9 kg)	64 x 26 x 56
SciCHLOR 4.0	40 LB (18 kg)	consult factory
SciCHLOR 6.0	60 LB (27 kg)	consult factory

MATERIALS:	Non-Corrosive
SALT TYPE:	ALL; granular table salt or 99.6% pure solar salt preferred
CAPACITIES:	10 lb (4.5kg), 20 lb (9kg), 40 lb (18kg), 60 lb (27kg)/day hypochlorite produced
POWER:	220 VAC 50/60Hz 1-Phase & 3-Phase
CHLORINE STRENGTH:	0.8% optimum



Ideal for use in the following applications:

- Recycling Water / Reuse Systems
- Large Aquatics and Pools
- Cooling Tower / Fire Water Systems
- Food & Beverage Processing
- Marine Vessels / Oil Platforms
- Oil Drilling Injection Systems
- Water & Wastewater Treatment Systems
- Hospital, Industrial, Commercial



12977 Maurer Industrial Dr.
Sunset Hills, MO 63127 USA
Ph: (314) 756-9300
Fax: (314) 756-9306

Web: www.sciencofast.com
e-mail: solutions@sciencofast.com