



*This  
Honey  
Does!*

# Honey Monster®

Septage Receiving System



## Overview

The automated Septage Receiving System is based on proven Auger Monster® technology, which allows cleaner handling of septage truck waste through separation of solids, including rocks, rags, clothing, plastic and other troublesome trash.

The unique combination of grinding, solids removal, washing and dewatering can be accomplished in approximately 5 to 15 minutes for a typical septage truck. The system is completely enclosed for safety and odor control.

## MonsterTrack™

An optional 'MonsterTrack' metering and control system is available for monitoring septage flow and providing accurate data usable for billing to septage haulers and the plant. The system is based on a card reader or digital key pad for security, in combination with a flow meter and plug valve.



*Rock trap assembly  
helps protect pumps.*

## Features & Benefits

### Easy Access, Pivoted Auger

- The auger is mounted to a pivot support for easy inspection or removal
- Using forklift or crane, operators can lift and swivel the screening trough and auger

### Advanced Screening and Dewatering

- Auger Monster screen with 1/4" (6mm) perforations removes unwanted solids and trash
- Patented dual compartment compaction zone provides significant additional dewatering

### Dual Shafted Grinding

- Maximizes surface area of solids for better washing and compacting

### Dual-manifold Wash Water System

- Ensures optimal throughput, minimizing odors
- Washes soft organics off of discharged solids

### High Level Ultrasonic Sensor

- Regulates flow for optimum performance
- Baffles prevent overflow conditions

### Optional 'MonsterTrack' Control System

- Card or PIN access for security
- Printed transaction receipts
- Data stored on compact flash media
- Ethernet/SCADA capable



**JWC**  
Environmental®

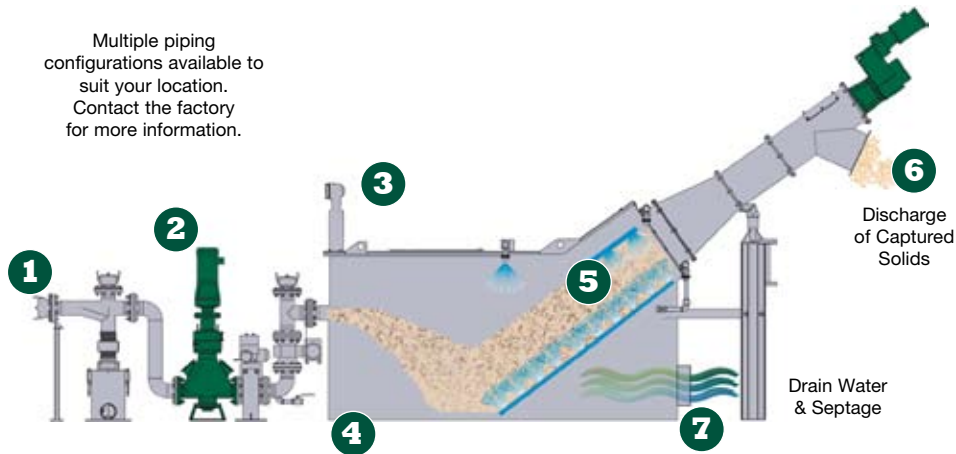
Trust Monster Quality™

[www.jwce.com](http://www.jwce.com)

# Honey Monster®

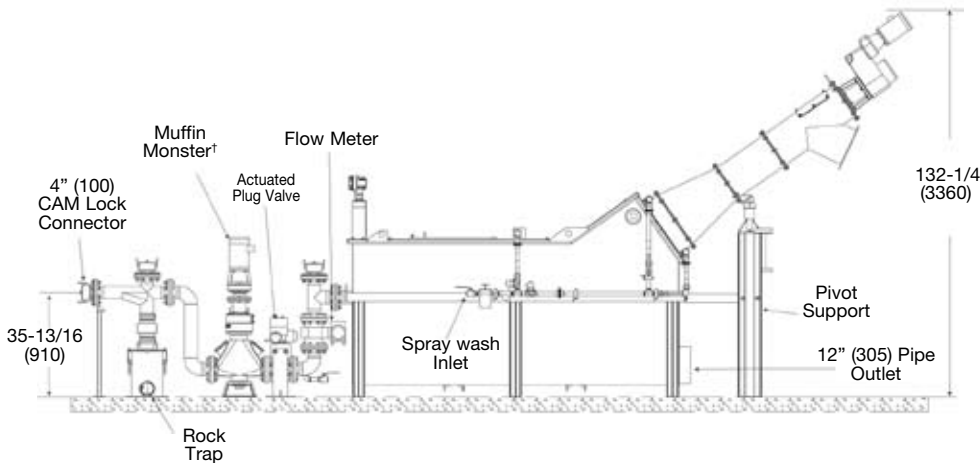
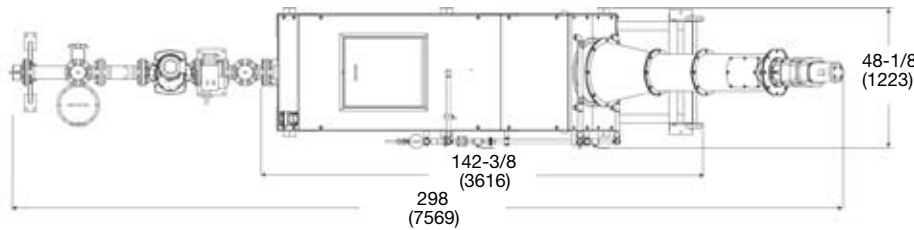
## Septage Receiving System

Multiple piping configurations available to suit your location. Contact the factory for more information.



## Operation

- 1) Septic waste from hauler is discharged into receiving system via a cam lock inlet and into the rock trap.
- 2) Material is processed through the Muffin Monster® grinder.
- 3) Ultrasonic level sensor and modulating plug valve regulate flow.
- 4) If the 'MonsterTrack' option is installed, the flow is measured by a magnetic flow meter and data is sent to the controller to create a billing record.
- 5) The ground septic waste is transferred to the auger. Spray wash helps wash the septic waste and wastewater through the perforated screen.
- 6) The unwanted solids are captured by the inclined auger screen and transported to the compaction zone for additional dewatering, then dropped in a bin ready for landfill disposal.
- 7) The screened septic waste now flows into the wastewater treatment plant.



## Materials of Construction

**Tank & Piping:** 304 stainless steel

**Auger System:** 304 stainless steel casing with Ø 480mm alloy steel centerless screw

**Cutters and Spacers:** 4130 heat treated alloy steel, surface ground for uniformity and through hardened to a minimum 45-50 Rockwell "C"

**Seal Faces:** Tungsten Carbide / Tungsten Carbide

**End Housings and Covers:** Cast ASTM A536-77 Ductile Iron

**Elastomers:** Buna-N®

Model	Screen Dia.	Auger Motor	Screenings Capacities	Max. Flow
SRS3235-XE	19" (480mm)	2 HP (1.5 kW)	90 ft³/h (2.55 m³/h)	Up to 1000 GPM (227 m³/h)*

\* 30004T-1204 uses standard 5HP (4kW) motor. \*Flow rated with clean water, site results will vary depending on solids content.

**Headquarters**  
290 Paularino Ave.  
Costa Mesa, CA 92626 USA  
Toll Free: (800) 331-2277  
Phone: (949) 833-3888  
Fax: (949) 833-8858  
jwce@jwce.com

**Western Product Support**  
2600 S. Garnsey St.  
Santa Ana, CA 92707, USA  
Toll Free: (800) 331-2277  
Phone: (949) 833-3888  
Fax: (714) 751-1913  
jwce@jwce.com

**Eastern Product Support**  
4485 Commerce Dr, Ste 109  
Buford, GA 30518, USA  
Toll Free: (800) 331-8783  
Phone: (770) 271-2106  
Fax: (770) 925-9406  
jwce@jwce.com



[www.jwce.com](http://www.jwce.com)