

AltaPac™ Series

AP-IV Flows from 20 to 180 gpm

The AltaPac™ AP-IV is designed as an economical membrane treatment system that is both easy to use and simple to install. This versatile system can treat up to approximately 120 gpm on surface waters and up to 180 gpm on groundwaters. The AltaPac™ IV can be upgraded from a three module system to a four module system by simply installing an additional module and changing the flow set point.

The AltaPac™ systems are fully functional, self contained skids which have all of the features and benefits of the full scale AltaFilter™ including automated operation and daily integrity tests.



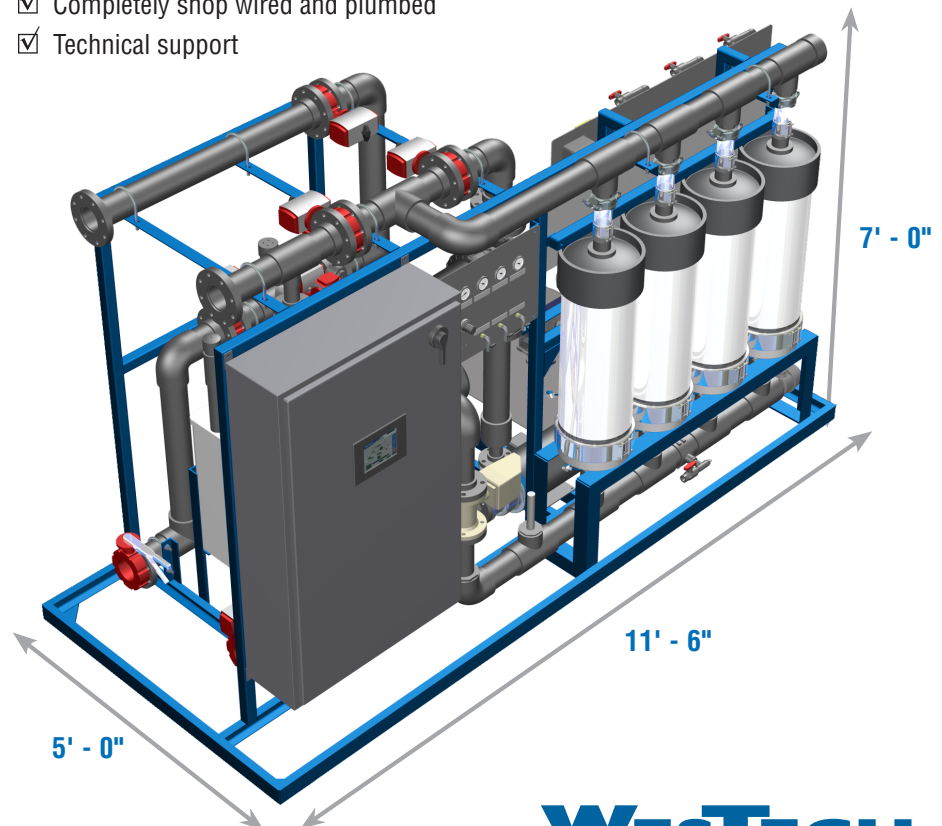
NSF61 Certified
ETV Certified
UL 508A Listed

Standard Features

- ✓ Ultrafiltration Membrane modules with a 0.01 pore size
- ✓ Durable, powder coated, welded steel skid
- ✓ Oversized 130 micron prestrainer
- ✓ Corrosion resistant HDPE / FRP Tanks
- ✓ Corrosion resistant Sch 80 PVC piping
- ✓ 316L stainless steel pumps
- ✓ Maintenance free magnetic flow meter
- ✓ pH / temperature sensor
- ✓ Reliable pneumatic actuators
- ✓ NEMA 4 PLC panel
- ✓ Panel mounted 8" color touch screen HMI
- ✓ Ethernet switch for system integration
- ✓ Modem for remote monitoring
- ✓ Completely shop wired and plumbed
- ✓ Technical support

Optional Features

- ☐ Raw Water Tank
- ☐ Filtered Water Tank
- ☐ Inline turbidity measurement
- ☐ Service and maintenance contracts
- ☐ Extended warranty



WESTECH

Standard Equipment Components

- ☒ Inlet pump – Goulds
- ☒ Backwash pump - Goulds
- ☒ Prestrainer – VAF
- ☒ Flow meter – Siemens 5100
- ☒ pH / temperature sensor – Hach
- ☒ Pressure transmitters – Wika
- ☒ Membrane modules – Polymem
- ☒ Air compressor - Quincy
- ☒ Chemical dosing pumps – LMI
- ☒ Valves – Bray Series 30/31
- ☒ PLC – Allen Bradley Micrologix 1100
- ☒ Modem – Allen Bradley
- ☒ Touch screen HMI – C-More
- ☒ Contactors – ABB
- ☒ VFD – Square D Altivar

Standard Upgrade Components

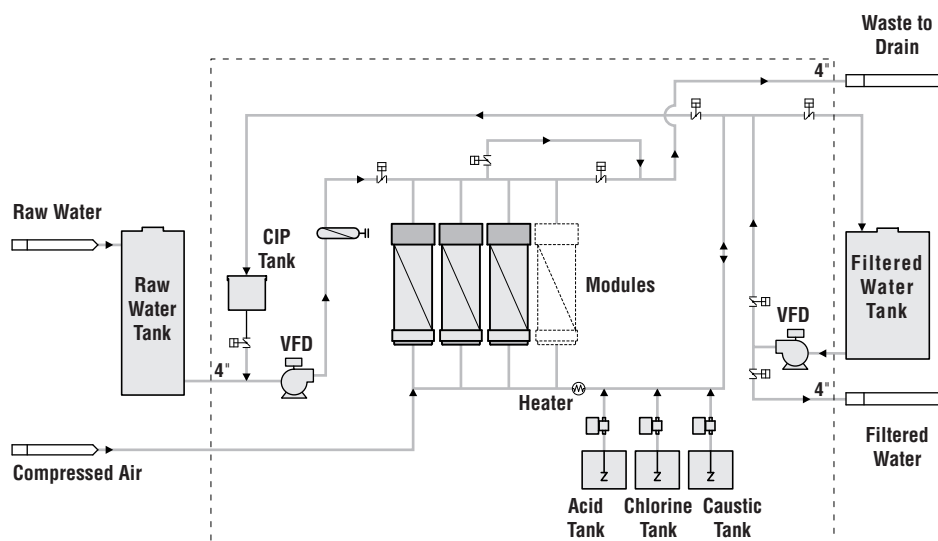
- ☐ Inline turbidimeters – Hach 1720E
- ☐ Raw Water Tank
- ☐ Filtered Water Tank

Skid Interfacing Requirements

- ☐ 480 volt, 3 phase power, 70 amps
- ☐ 575 volt, 3 phase power 60 amps
- ☒ 4" inlet
- ☒ 4" outlet
- ☒ ½" drains
- ☒ General alarm output
- ☒ Ethernet (optional)
- ☐ Phone line (optional)

Typical Filtered Water Quality

Turbidity	<0.1 NTU
Bacteria	99.9999% removal
Giardia	99.9999% removal
Cryptosporidium	99.9999% removal
SDI	< 2



Skid Shipping Weight: 3,000 lbs

Skid Operating Weight: 5,000 lbs

WestTech

Phone: (801) 265-1000 • Fax: (801) 265-1080

P.O. Box 65068 • Salt Lake City, Utah 84165-0068

e-mail: info@westech-inc.com • www.westech-inc.com

Represented by: