

PRODUCT DATA SHEET

January, 2007

CPC FIXED AXLE TANK

("TUFF TANK" VERSION)

GENERAL INFORMATION

This tank has a smooth interior wall and V-shaped bottom for easy cleaning.

WEIGHTS AND MEASURES

» Capacity:	500 BBL (21,000 gal.)
» Height:	10'-9" (grade to top of tank)
» Width :	8'-0"
» Length:	44'-10" overall (rear of tank to end of nose guard)
» Weight:	25,500 lbs.

STRUCTURAL DESIGN

» Floor:	¼" thick ASTM A36 carbon steel, "V" bottom sloping from each side to center
» Sides/Ends:	¼" thick ASTM A36 carbon steel
» Roof Deck:	¼" thick ASTM A36 carbon steel
» Wall Frame:	¼" thick ASTM A36 carbon steel channel (on exterior side of walls)
» Roof Frame:	¼" thick ASTM A36 carbon steel channel (on exterior side of roof deck)

FEATURES

» Valves:	(2)Front & (1)Rear: 4" wafer butterfly. Cast iron body, Buna-N seat & seals, 316 SS stem, Nylon 11 coated ductile iron disk, with plug and chain. Remote operation handle for rear valve
» Relief Valve:	16 oz./in ² pressure setting, 0.4 oz./in ² vacuum setting; Buna-N seal
» Front Drain & Front Supply:	4"-150# tank-side weld neck flange mated to valve and 150# FPT flange
» Rear Drain:	4"-150# tank-side weld neck flange mated to valve and 150# FPT flange

FEATURES - cont.

» Top Fill Line:	3" pipe, top of tank, with cap and chain
» Top Vapor Connection:	4"-150# weld neck flange with blind flange (chained) and Buna N gasket
» Top Manway:	22" I.D., slotted hinges and 5 - ¾" T or eye bolt with wing nut fasteners, hinged to side of tank, ½" flat plate or 3/8" if domed ASTM A36 steel. Buna N gasket is thermally fused.
» Front Manway:	22" I.D., slotted hinges and 5 - ¾" T or eye bolt with wing nut fasteners, hinged away from stairs, ½" flat plate or 3/8" if domed ASTM A36 steel. Buna N gasket is thermally fused.
» Side Manway:	22" I.D., slotted hinges and 5 - ¾" T or eye bolt with wing nut fasteners, mounted on passenger side and hinged to front of tank, ½" flat plate or 3/8" if domed ASTM A36 steel. Buna N gasket, is thermally fused.
» Stairway:	Non-slip with handrails and guardrails; OSHA compliant
» Level Gauge:	Ball style with 2-8" 304 SS floats. Floor supports hold floats ½" off floor.
» Tires:	11.00 x 22.5 Nylon tubeless
» Axles:	Standard 22,500#, Rockwell automatic slack adjusters, cast drum and hub, 30 service chambers, outboard drums

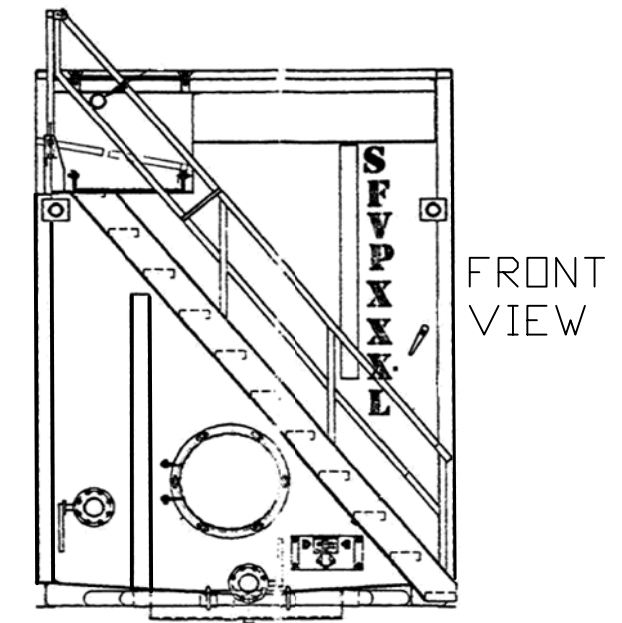
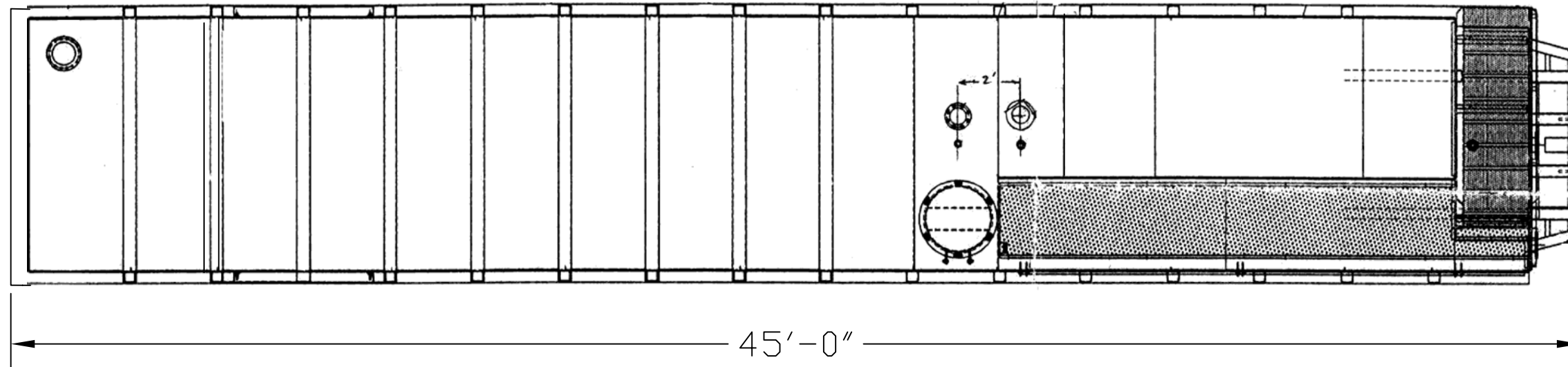
SURFACE DETAILS

» Exterior Coating:	High gloss polyurethane paint
» Interior Coating:	Chemical resistant lining
» Safety Paint:	Safety yellow - handrails, hatch covers and trip hazard surfaces
» Decal Mounts:	Removable 10-gauge steel, 48"x48", both sides of tank at top rear. Secured with Nylock nuts or bolts with lock washers.

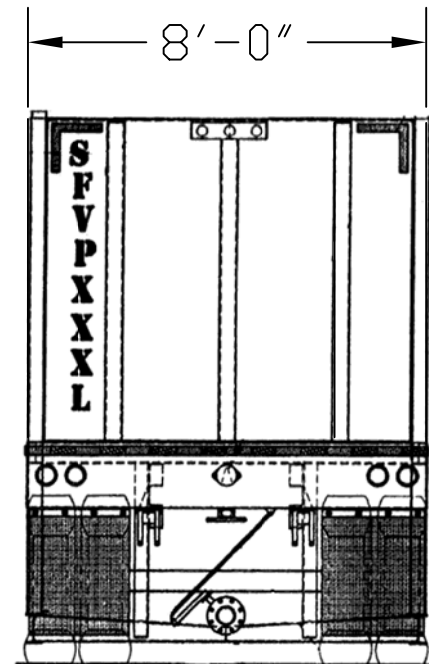
TESTS/CERTIFICATIONS

» Test Performed:	Hydrostatic water test after construction and major repairs; Level I, II and III inspections on a scheduled basis
-------------------	---

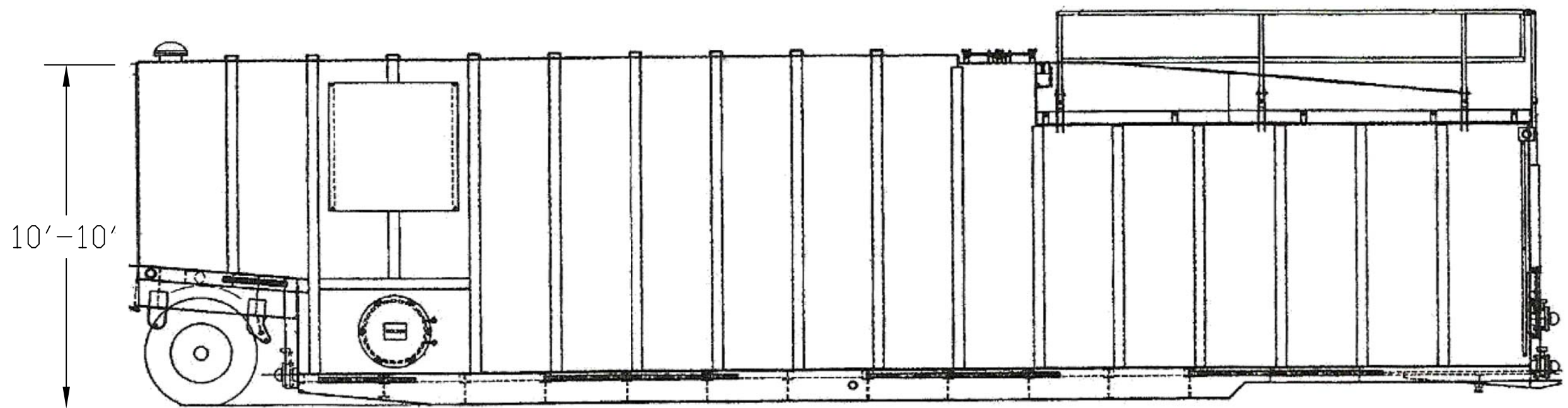
TOP VIEW



FRONT VIEW



REAR VIEW



SPECIFICATIONS:

- 1) Tank Capacity: 21,000 gallons (500 BBL)
- 2) Tank Weight: 25,500 lbs. (empty)

NOTES:

- 1. This drawing is a baseline representation for this model of tank. Variations between this drawing and the actual equipment in the field can and do exist, primarily with appurtenance locations, sizes and quantities. Consult your local BakerCorp representative if specific needs exist.
- 2. **THIS TANK IS NOT DESIGNED FOR TRANSPORTING LIQUIDS.** It should be moved only when empty.
- 3. Tanks of this type have an internal lining (coating) on the wetted surfaces.
- 4. This tank is equipped with a pressure/vacuum relief valve set at 1.0 lbs/sq. in. pressure and 0.4 oz/sq.in. vacuum.

The information contained herein is proprietary to BakerCorp and shall not be reproduced or disclosed in whole or in part, or used for any design or manufacture except when user obtains direct written authorization from BakerCorp.

BAKERCORP 3020 OLD RANCH PARKWAY
SEAL BEACH, CA 90740-2751

G				SCALE: Do Not Scale	SIZE B	ORIGINAL DWG. DATE 26JUN03
F				DRAWN BY: P.J.B.	APPROVED BY: -	CAT/CLASS --
E				TITLE CPC FIXED AXLE TANK		SHEET 1 OF 1
D				DRAWING NO. S-2-M0013-1-	REV. 0	
C						
B						
A						
REV.	DESCRIPTION	DATE	BY			