

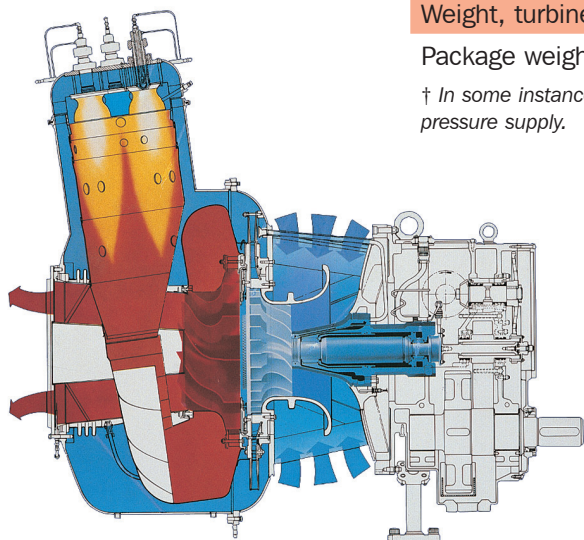
KG2-3E

Gas Turbine Generator Package

During the past 40 years, gas turbine units have played an increasingly important role in the generation of electrical power. They are dominant in the offshore industry, and are used extensively throughout the world in general power applications.



Below: KG2 1.5 - 2.25 MW;
bottom right: 1400 kW KG2
generator set package for a
North Sea production platform



KG2 Gas Turbines for Power Generation

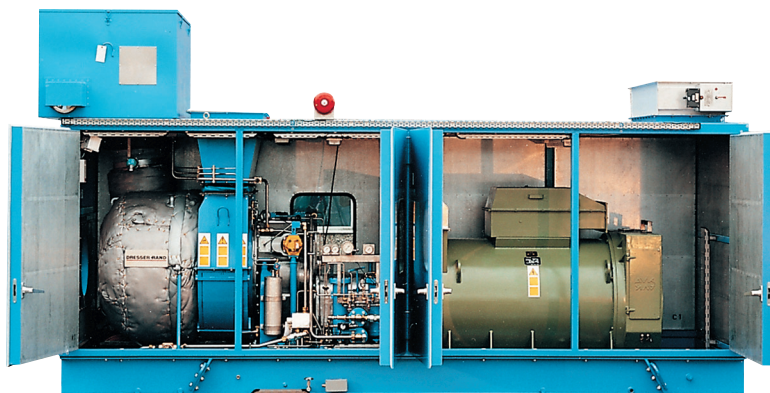
With 99.3 percent start reliability*, full-load throw-on capacity, and minimal maintenance requirements, the Dresser-Rand KG2 gas turbine is ideal for stand-by and continuous power supply — onshore and offshore. The KG2 generator set has been specifically designed to meet requirements for power from 1 MW to 10 MW (single and multiple units). More than 900 units have been delivered for standby, industrial, and oil and gas applications worldwide.

*Based on D-R's field data across the entire installed fleet from our first installation in 1968 to date.

KG2 Gas Turbine Technical Data

	Base Load	Standby
ISO (15°C / 59°F) shaft output (kW)	1,934	2,250
Output shaft speed	1,500/1,800	1,500/1,800
Fuel type	Natural gas, diesel fuel, low calorific fuel, associated gas, solid fuel and BIOMASS as indirectly fired unit	
Fuel flow, full load (MJ/sec)	11.54	12.76
Exhaust gas temperature °C / °F	549 / 1020	604 / 1119
Exhaust mass flow (kg/sec)	15.0	14.9
Net recoverable exhaust energy (MJ/sec)	6.6	N/A
Fuel gas inlet pressure (barg)†	8	8
Starting time to full load (approx.)	33-35 seconds depending on type of start system	
Maximum load changes permitted as blockload	100%	100%
Generators	220 V to 11 kV	
Weight, turbine/gear (kg)	1,925	
Package weight (kg)	18,000	

† In some instances, lower pressures are acceptable; for example, when a client can guarantee a constant pressure supply.



For more information on the **KG2-3E gas turbine**, contact one of the following locations:

Dresser-Rand

Kirkegaardsveien 45,
3601 Kongsberg, Norway
Tel: (Int'l +47) 32287070
Fax: (Int'l +47) 322-87080

Dresser-Rand

1200 West Sam Houston Pkwy. N.
Houston, TX 77043
Tel: (Int'l +1) 713-935-3400
Fax: (Int'l +1) 713-935-3490

For a complete listing of products and services, visit

www.dresser-rand.com

or contact one of the following Dresser-Rand locations.

Dresser-Rand

Corporate Headquarters

West8 Tower Suite 1000
10205 Westheimer Road
Houston, TX 77042 USA
Tel: (Int'l +1) 713-354-6100
Fax: (Int'l +1) 713-354-6110
email: info@dresser-rand.com

112, Avenue Kleber
75784 – Paris Cedex 16
Tel: (Int'l +33) 156 26 71 71
Fax: (Int'l +33) 156 26 71 72
email: info@dresser-rand.com

Regional Headquarters

The Americas

Dresser-Rand
West8 Tower Suite 1000
10205 Westheimer Road
Houston, TX 77042 USA
Tel: (Int'l +1) 713-354-6100
Fax: (Int'l +1) 713-354-6110

EMEA

(Europe, Middle East, Eurasia, Africa)
Dresser-Rand S.A.
31 Boulevard Winston Churchill
Cedex 7013
Le Havre 76080 France
Tel: (Int'l +33) 2-35-25-5225
Fax: (Int'l +33) 2-35-25-5366 / 5367

Asia-Pacific

Dresser-Rand Asia Pacific Sdn Bhd
Unit 9-4, 9th Floor
Bangunan Malaysian Re
17 Lorong Dungun
Damansara Heights
50490 Kuala Lumpur, Malaysia
Tel: (Int'l +60) 3-2093-6633
Fax: (Int'l +60) 3-2093-2622

Key Benefits

- Minimum space required for compact, low-weight arrangement
- Easily maintained, skid-mounted, enclosed generator set
- Highly reliable
- Demonstrates 98 to 99 percent availability
- Start-up reliability of 99.3 percent
- Proven by fleet leader unit exceeding 150,000 operating hours
- Negligible vibration signature
- Low-noise, enclosed generator set (85 dBA at one meter)
- Integrated control room (optional)
- Single, dual, and bi-fuel operation
- Acceptance of solid fuels and biomass in indirectly fired unit
- High sulphur acceptance for gas fuel
- No bearings in the hot zone



Left: Two KG2-3E generator sets provide emergency power onboard the Troll oil platform in the North Sea
Below: KG2-3E stand-by power installation at Korba site for the Trans Tunisian Pipeline, operated by SCOGAT (Tunisia)

