

### PRODUCT DATA SHEET

January, 2007

### EASY ACCESS TANK

#### GENERAL INFORMATION

Hinged deck lid sections form a permanent catwalk yet permit visual inspection of all internal surfaces. Lid sections are torsion bar counterbalanced for easy lifting. This style of tank is not vapor tight.

#### WEIGHTS AND MEASURES

» Capacity:	.....	Standard tank – 500 BBL. (21,000 gal.) Short tank – 475 BBL. (19,950 gal.)
» Height:	.....	Standard – 12'-6" Short – 11'-10"
» Width :	.....	Standard – 8'-0" Short – 8'-0"
» Length:	.....	Standard & Short – 35'-0" (36'-0" including rear ladder or 37'-6" with stairway)
» Weight:	.....	Standard – 21,000 lbs. (approx.) Short – 20,500 lbs. (approx.)

#### STRUCTURAL DESIGN

» Floor:	.....	¼" thick ASTM A36 carbon steel
» Sides/Ends:	.....	¼" thick ASTM A36 carbon steel
» Roof Deck:	.....	¼" thick ASTM A36 carbon steel
» Wall Frame:	.....	Structural steel channel/angle on interior
» Floor Frame:	.....	6" carbon steel I-beam on exterior side
» Roof Frame:	.....	4" steel channel
» Internal Cross Bracing:	.....	15 – 3"x3"x¼" angle iron

#### FEATURES

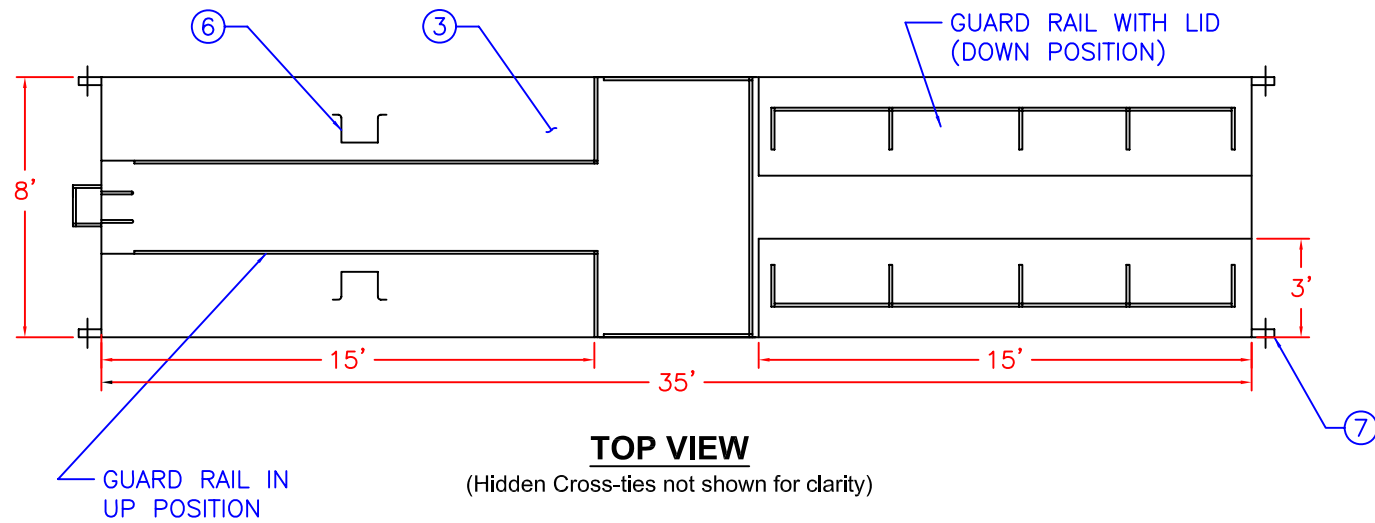
» Valves:	.....	May be fitted with a combination of 4" and 6" butterfly valves.
» Relief Valve:	.....	None
» Front Collar:	.....	4" threaded nipple extension, plugged or capped
» Bottom Sump:	.....	One on each end of tank, either flat bottomed, 12" diameter, 3" deep, or domed, 14" diameter, 4" deep
» Top Access Doors:	.....	4 - 186" x 32" x 1/8" thick steel plate with torsion bars
» Internal Ladder:	.....	1 – 16" wide x 140" long
» Manways:	.....	None
» Roof Access:	.....	Ladder or stairway mounted on rear of tank
» Guardrails:	.....	Around top deck, fold-down, 1" x 1½" tubing
» Level Gauge:	.....	None
» Rear Wheels:	.....	Removable dolly (not a fixed axle)

#### SURFACE DETAILS

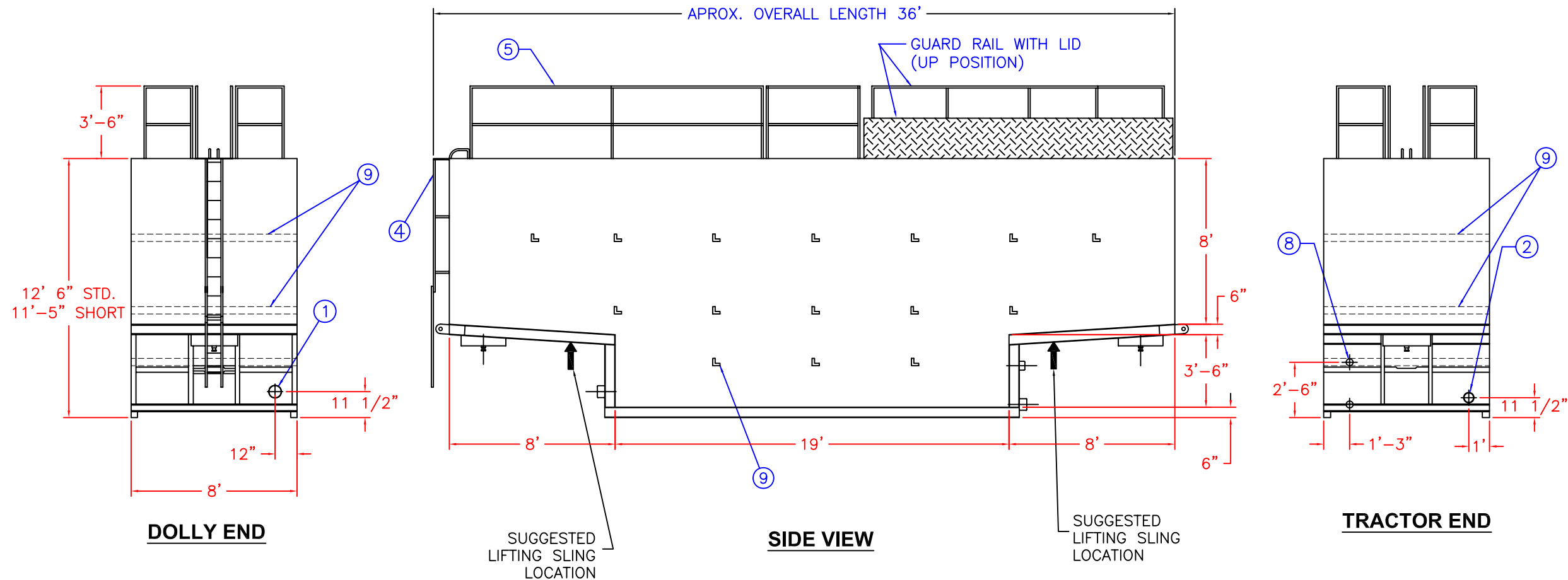
» Exterior Coating:	.....	High Gloss Polyurethane
» Interior Coating:	.....	None

#### TESTS/CERTIFICATIONS

» Test Performed:	.....	New construction and skin repairs: hydrotest Scheduled: Level I, II & III inspections
-------------------	-------	--



ITEM	QTY	DESCRIPTION
1	1	6" BUTTERFLY VALVE
2	1	4" BUTTERFLY VALVE
3	4	15'X3' ACCESS HATCH, C'BALANCED
4	1	EXTERNAL LADDER
5	1	OSHA COMPLIANT GUARD RAIL
6	2	PULL HANDLES FOR LIFTING LID
7	2	PULL EYES FOR LOADING TANK
8	2	4" NIPPLE WITH CAP
9	17	INTERNAL CROSS TIES




#### SPECIFICATIONS:

- Tank Capacity  
Standard: 21,000 gallons (500 BBL)  
Short: 19,950 gallons (475 BBL)
- Tank Weight  
Standard: 21,000 - 22,000 lbs. (empty)  
Short: 20,000 - 21,000 lbs (empty)
- Material of Construction: A36 Carbon Steel

#### NOTES:

- This drawing is a baseline representation for this model of tank. Variations between this drawing and the actual equipment in the field can and do exist, primarily with appurtenance locations, sizes and quantities. Consult your local BakerCorp representative if specific needs exist.
- THESE TANKS ARE NOT DESIGNED FOR TRANSPORTING LIQUIDS. Tanks should be moved only when empty.

The information contained herein is proprietary to BakerCorp and shall not be reproduced or disclosed in whole or in part, or used for any design or manufacture except when user obtains direct written authorization from BakerCorp.				 3020 OLD RANCH PARKWAY SEAL BEACH, CA 90740-2751		
G				SCALE: NOT TO SCALE	SIZE B	ORIGINAL DWG. DATE 28FEB02
F						
E				DRAWN BY: A. R.	APPROVED BY: —	CAT/CLASS —
D						
C				TITLE EASY ACCESS TANK (LADDER VERSION)		SHEET 1 OF 1
B				DRAWING NO. S-1-M0003-1-		REV. B
A	ADDED HIDDEN LINES AND TEXT	7/12/05	Z.E.R.			
REV.	DESCRIPTION	DATE	BY			