

Hydro-Guard® HG-8

Standard

Automatic Flushing System • Sub-surface Installation • Freeze Protected

The Hydro-Guard® HG-8 Flushing System is designed to be installed with all of its components located well below the frost-line to avoid freezing, yet remain easily accessible at ground surface for programming or for maintenance. It uses the field proven design of the Mueller® Thermal-Coil® Box. In this design, all components are mounted on a movable platform and connected to inlet and outlet piping through flexible coiled tubing. This arrangement allows the platform to be raised to the surface easily, then lowered for normal service deep below the frost line where the components are protected against freezing temperatures.

At the surface, the HG-8 installation is only evidenced by its cast iron access lid flush at ground level. There is no above surface enclosure to detract from the aesthetics of the surrounding area—a unique feature of the HG-8 model.

Designed for use with a removable multi-event programmer, the HG-8 unit can be programmed to flush a water line multiple times per day, seven days per week with flush durations ranging from one minute to four hours per program. The remote handheld programmer can be used to set multiple Hydro-Guard flushing devices.

Other features include:

- Discharge water can be directed to a storm water sewer or retention pond
- OEM installed dechlorination system meets local, state and federal discharge water standards
- Sampling quick connect
- Mechanical thermal control valve for added freeze protection
- Modular inline double check valve to reduce the potential of a backflow
- Designed to accept 1" meter

Comply with EPA Stage II DBPR Standards while saving water, time and costs. Calculate your ROI using our on-line calculator at www.Hydro-Guard.com.

Benefits of flushing with the HG-8 Standard Sub-surface System :

- ✓ Reduces water waste associated with flushing
- ✓ Improves capability to meet EPA Stage II DBPR Standards
- ✓ Controlled and consistent flushing of distribution system
- ✓ Enhance success in maintaining consistent residual levels
- ✓ Reduced operational expenses (i.e. labor, vehicle, maintenance and benefits costs)
- ✓ Engineered for durability and long service life, helps to maximize Life Cycle Cost benefits
- ✓ Meter easily added to track non-revenue water



Bury depths 3' to 9' available (custom depths also available).



Handheld programming provides an added layer of security and is a standard capability of the HG-8 Standard unit (removable handheld unit is purchase separately, but can be used with multiple Hydro-Guard flushing models).



Orders and Information:
(877) 864-8500
www.Hydro-Guard.com

Specifications

Models

Model:

Above Grade Dimensions:

Bury Depth/Shipping Weight:

HG-8 Standard Sub-Surface

Flush with surface

3'/90 lbs

5'/130 lbs

7'/160 lbs

9'/190 lbs

Standard Features:

- Programming managed by removable multi-event remote handheld programmer– handheld purchased separately, but usable on multiple Hydro-Guard® flushing units
- Battery and programming interface accessible from top of unit, at grade
- 7 psi to 150 psi operating pressure (valve rated to 200 psi)
- Below-grade design with 1" coil inlet and outlet service lines
- 1" glass reinforced Nylon control valve with straight through pass
- Patented freeze protection system features an OEM installed mechanical thermal control valve and platform mounted components designed to be lowered beneath frost line that protects the device from freeze damage
- Inline modular double check valve for backflow prevention
- Tough, rigid 0.30" min. PVC sub-surface enclosure
- Cast Iron Lid assembly
- OEM installed Dechlorination System (8-tablet capacity)
- OEM installed Sampling Quick-connect (allows sample collection with unit on or off)

Options and Accessories:

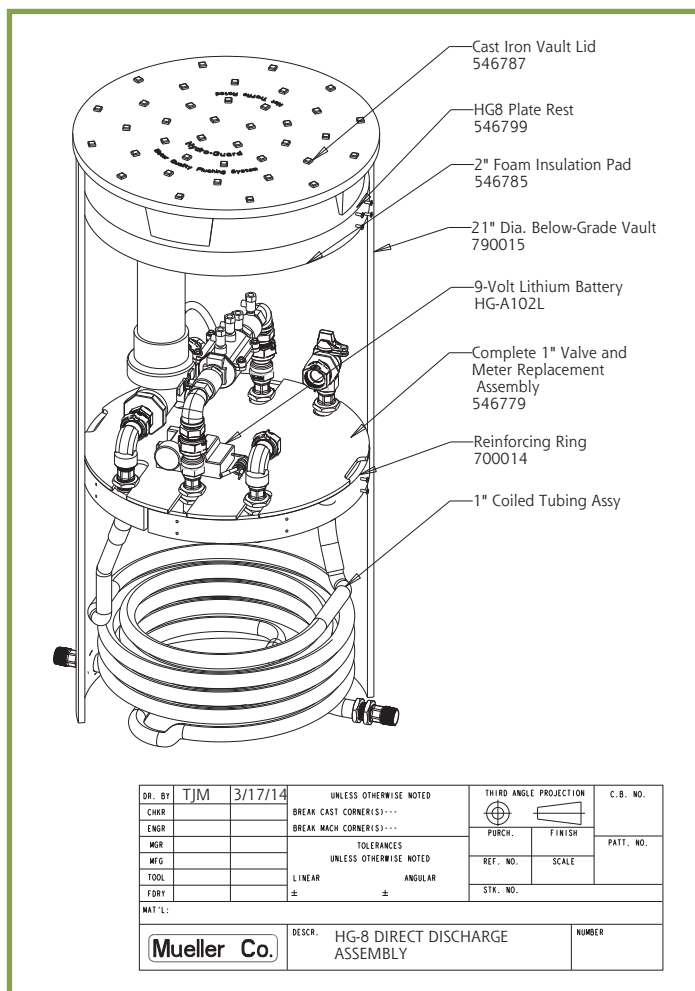
- Bury depths 3', 5', 7', or 9'
- Integrated built-in programmer

Part Number

Digits in black spaces are set (standard features), white spaces indicate options.

Device	Model	Inlet Valve	Bury Depth	Freeze Protection	Double Check Valve	Dechlorination	Cast Iron Lid
HG8	ST	01		FP	DC	08	CLD
	SI		036				
			060				
			084				
			108				

= 36"
 = 60"
 = 84"
 = 108"



DR. BY	TJM	3/17/14	UNLESS OTHERWISE NOTED		THIRD ANGLE PROJECTION		C.B. NO.
CHKR			BREAK CAST CORNER(S)---		PURCH. FINISH		PATT. NO.
ENGR			BREAK MACH CORNER(S)---		REF. NO. SCALE		
MGR			TOLERANCES UNLESS OTHERWISE NOTED		STR. NO.		
MFG			LINEAR ANGULAR				
TOOL							
DRY							
MATERIAL:			DESCR. HG-8 DIRECT DISCHARGE ASSEMBLY				NUMBER
Mueller Co.							

(877) 864-8500 • www.Hydro-Guard.com

Sales@Hydro-Guard.com

Toll Free Customer Service and FAX (888) 277-4520

Mueller Co. SmartMove™